



SYP 系列离心式空调风机

概述

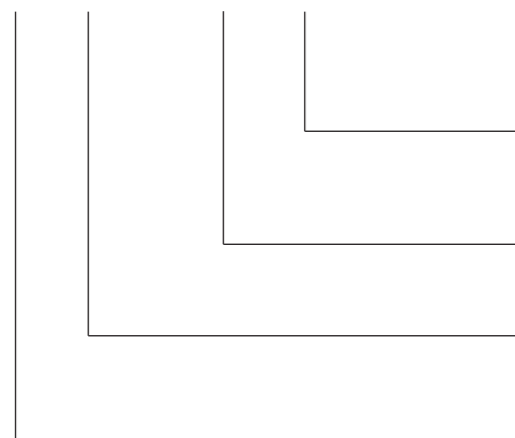
SYP 系列离心式空调风机是本公司在国内首家推出的中央空调风机盘管专用前向多翼离心式金属风机。具有效率高、噪声低、结构精巧等特点，风量和压力能满足宽广的运行范围，叶轮直径 130~250mm，风量 250m³/h~3000m³/h。产品达到国内领先水平，首家代替进口，目前市场占有率 55% 以上。

Summary

The SYP series air-conditioning fan, used for fan coil only, is the forward multi-vane centrifugal metallic fan developed and manufactured first by our company in the country. The fan Wheels are made of high quality of hot galvanizing steel sheet by using stamping technology with the advantages of high efficiency, lower noise and precision construction. Both the flow volume and pressure can meet with wide application, and the diameter of the Wheel is from 130mm to 250mm. The flow volume ranges from 250m³/h to 3000m³/h. Our products have reached the advanced level and have replaced those imported ones first in the country. Now the products have 55% share of the domestic market.

命名方式

SYP 250 / 190 J



Nomenclature

可省略代号(叶轮卷边式加工工艺,与风机性能及尺寸无关)
Code J, can be omitted(technology of edge-curved wheel, nothing with fan performance and dimensions)

叶轮名义长度(inch)
Nominal length Wheel(inch)

叶轮名义直径(inch)
Nominal diameter of Wheel (inch)

前向多翼离心风机系列代号
Fan series with multi-vane forward curved blades

产品型式

风机按轴套安装的方向可分为左式和右式，从轴套一端正视，叶轮顺时针旋转的称为右式，逆时针旋转的称为左式。

Product Features

According to the installed position of the hub, the fan can be divided into two types, right type and left type; viewing from hub side, if the Wheel rotates clockwise, the fan is called right type; if it rotates anti-clockwise, the fan is called left type.

产品结构

SYP 系列风机主要机壳、叶轮、轴套三部分组成。

1. 机壳

机壳采用优质热镀锌钢板制成，侧板具有符合空气动力的外形，进风圈整体拉伸成型，蜗板以咬边的方式，用自攻螺钉与侧板连成一体。在出风口，蜗板设计成符合空气动力的特殊风舌，以阻止在出口气流中形成漩涡。

2. 叶轮

前向多翼叶轮采用优质镀锌板进精密级进模冲压。卷边成型，合理的设计使风机的气动性能达到最佳状态。所有叶轮均按照 ANSI/AMCA-204 标准运用精确的电子平衡机进行两级动平衡测试，内控精度达到 G2.5 级或更优水平。

3. 轴套

叶轮与电机轴由轴套连接，轴套采用结构钢加工而成或锌合金经压铸后精加工而成，轴孔的公差、垂直度、同轴度允差均在 0.01mm 之内。

Construction of Product

SYP series fans are mainly consisted of housing , Wheel and hub.

1. Housing

The housing is made of imported quality galvanizing sheet. Its side plates take the shape according to the aerodynamic profile and are fixed with biting-scroll with tapping screws.

2. Wheel

Forwards curved radial Wheel is made of high-grade imported hot-galvanizing steel punched with precision mould and curled.The reasonable design of impeller makes the ventilator work in the optimum condition. The Wheel is fixed on the middle disk plate and on the end ring with riveting grippers. The Wheel has enough rigidity during continuous rotation with maximum power. All Wheels have passed by ANSI/AMCA-204 balance test according to the Company Standard which is higher level than National Standard.

3. Hub

The connection of Wheel with electric motor shaft is guaranteed by the hub which is made of constructional steeldor die cast zinc alloy followed by precision processing. The permissible tolerance of hole diameter, per- pendicularity and coaxality are all kept within 0.01 mm.

说明

- 1). 本样本中的风机性能是配用标准电机的测试结果，用户可根据要求，自行选用电机进行匹配以达到性能变化的需求。
- 2). 风机在运输、装卸过程中应小心轻放，严禁撞击挤压，严禁堆放于潮湿或有腐蚀性的场合。
- 3). 风机安装前应用手拨动叶轮，检查是否有过紧或碰撞现象，确认没有这些现象时方可进行试运转。
- 4). 风机安装后应检查机壳和其他壳体内部，不应遗留的工具和杂物。
- 5). 风机正式运转前，需检查叶轮的转向是否符合侧板上的转向标记。
- 6). 订货时需注明风机型号、配用电机型号、风机的风量、风压等参数。

Instructions

- 1) Matching electric motor power of ventilation denotes internal power plus safety coefficient of electric motor capacity in special operating condition, it does denote the power required during full opening of air outlet. Therefore no-load running of fan without any applied resistance is strictly prohibited in order to avoid burning out of the motor caused by its operation at over rated power.
- 2) Special care should be taken during transportation, load and unload.
The fan is limited for use in areas where air substances are non-corrosive, non-toxics and non-erosive.
- 3) Prior to installing fan, rotate the Wheel by hand or stick to check for tightness or impact. If it is ensured that there is no tightness and impact, then the installation can be carried out.
- 4) After installing, the fan, the scroll of fan should be inspected, there should not be tools and extra matters remained in the casing.
- 5) Prior to official operation of ventilation, it is necessary to check the rotating direction of both motor and fan for their coordination.
- 6) During ordering it is necessary to state the type of fan, speed, air volume, air pressure, direction of air outlet, rotating direction, type of electric motor and its specifications.

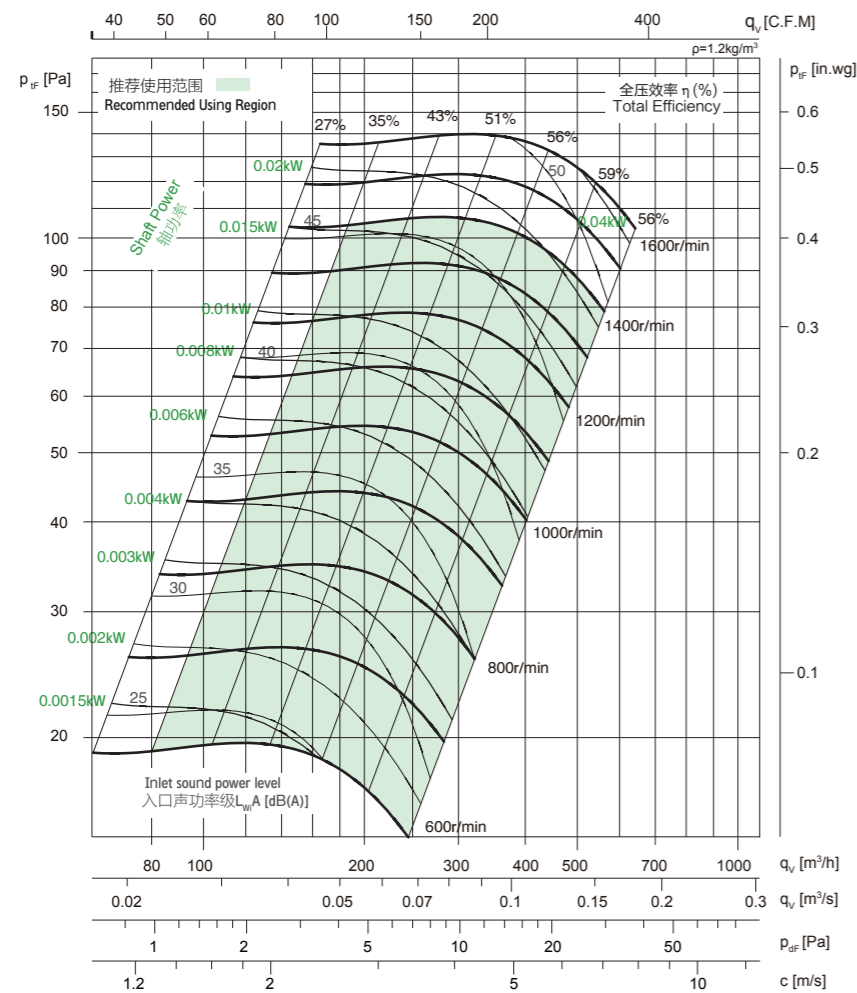
技术参数 Technical Data

Wheel diameter	叶轮直径	D = 130 mm	Fan weight	风机质量	m = 0.95 kg
Moment of inertia	转动惯量	J = 0.001 kg·m ²	Speed limit	极限转速	n _{max} = 1400 r/min

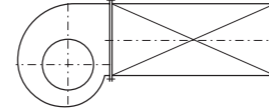
性能曲线 Performance Curves

Performance certified is for installation type B: free inlet, ducted outlet. Power rating (kW) does not include transmission losses. Performance ratings do not include the effects of appurtenances (accessories). The A-weighted sound ratings shown have been calculated per AMCA International Standard 301. Values shown are for inlet L_{WA} sound power levels for installation type B: free inlet, ducted outlet.

经认证的性能是B类安装:自由入口,管道出口。功率额定值(kW)不包括传输损失。各项性能额定值不包括附属物(附件)的影响。所示A加权声音性能额定值已按AMCA International标准301计算。所示值为安装类型B:自由入口,管道出口的声功率级(入口L_{WA})。



Measured in installation B according to AMCA 211:



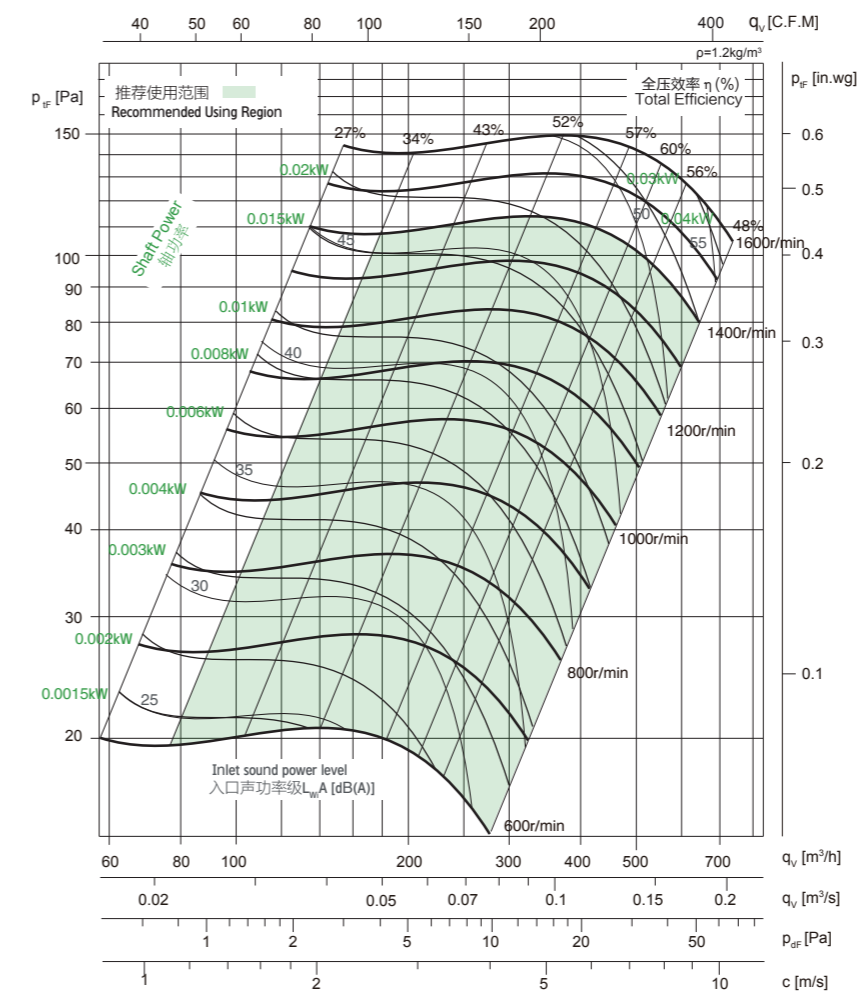
技术参数 Technical Data

Wheel diameter	叶轮直径	D = 130 mm	Fan weight	风机质量	m = 0.96 kg
Moment of inertia	转动惯量	J = 0.001 kg·m ²	Speed limit	极限转速	n _{max} = 1400 r/min

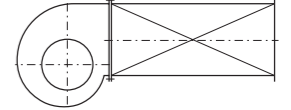
性能曲线 Performance Curves

Performance certified is for installation type B: free inlet, ducted outlet. Power rating (kW) does not include transmission losses. Performance ratings do not include the effects of appurtenances (accessories). The A-weighted sound ratings shown have been calculated per AMCA International Standard 301. Values shown are for inlet L_{WA} sound power levels for installation type B: free inlet, ducted outlet.

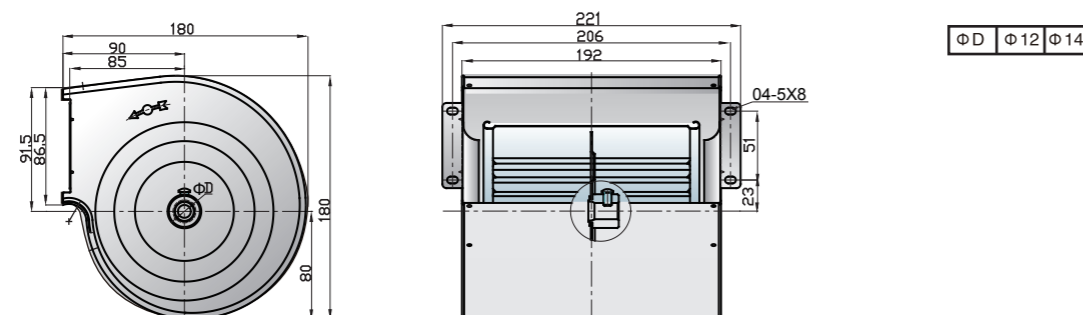
经认证的性能是B类安装:自由入口,管道出口。功率额定值(kW)不包括传输损失。各项性能额定值不包括附属物(附件)的影响。所示A加权声音性能额定值已按AMCA International标准301计算。所示值为安装类型B:自由入口,管道出口的声功率级(入口L_{WA})。



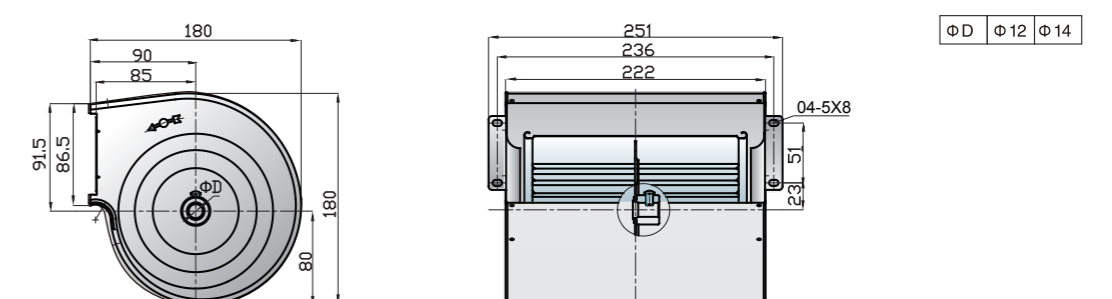
Measured in installation B according to AMCA 211:



外形尺寸 Overall Size



外形尺寸 Overall Size



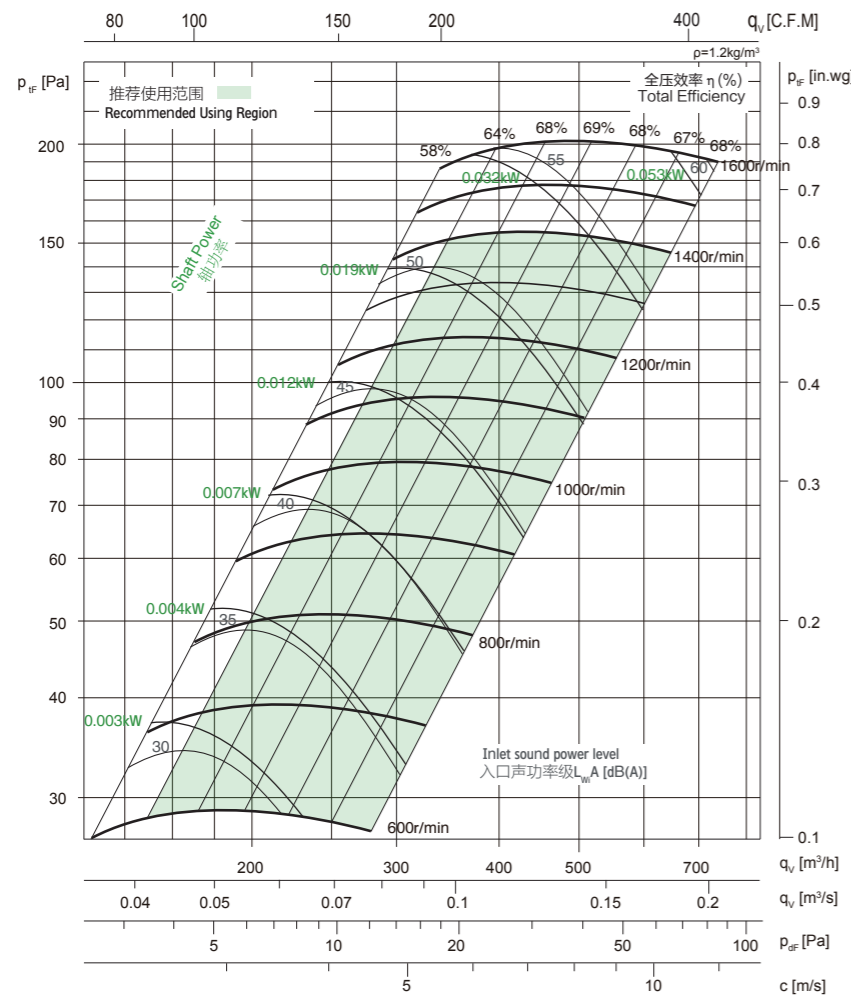
技术参数 Technical Data

Wheel diameter	叶轮直径	D = 145 mm	Fan weight	风机质量	m = 0.94 kg
Moment of inertia	转动惯量	J = 0.001 kg·m ²	Speed limit	极限转速	n _{max} = 1400 r/min

性能曲线 Performance Curves

Performance certified is for installation type B: free inlet, ducted outlet. Power rating (kW) does not include transmission losses. Performance ratings do not include the effects of appurtenances (accessories). The A-weighted sound ratings shown have been calculated per AMCA International Standard 301. Values shown are for inlet L_{WA} sound power levels for installation type B: free inlet, ducted outlet.

经认证的性能是B类安装:自由入口,管道出口。功率额定值(kW)不包括传输损失。各项性能额定值不包括附属物(附件)的影响。所示A加权声音性能额定值已按AMCA International标准301计算。所示值为安装类型B:自由入口,管道出口的声功率级(入口L_{WA})。



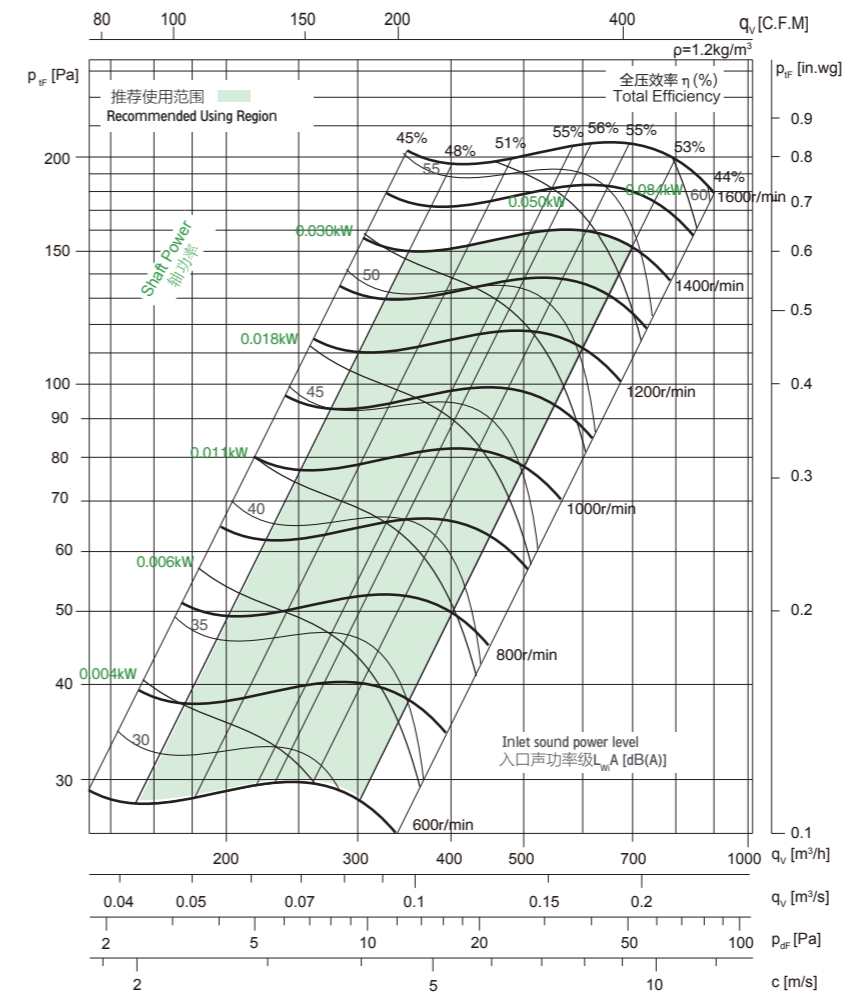
技术参数 Technical Data

Wheel diameter	叶轮直径	D = 145 mm	Fan weight	风机质量	m = 1.07 kg
Moment of inertia	转动惯量	J = 0.001 kg·m ²	Speed limit	极限转速	n _{max} = 1400 r/min

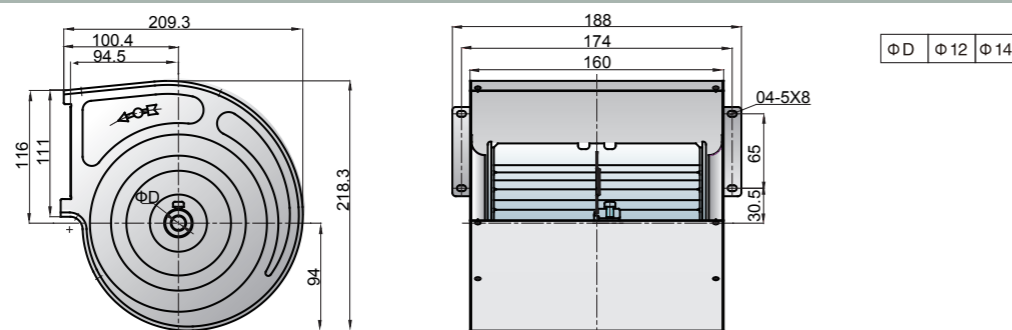
性能曲线 Performance Curves

Performance certified is for installation type B: free inlet, ducted outlet. Power rating (kW) does not include transmission losses. Performance ratings do not include the effects of appurtenances (accessories). The A-weighted sound ratings shown have been calculated per AMCA International Standard 301. Values shown are for inlet L_{WA} sound power levels for installation type B: free inlet, ducted outlet.

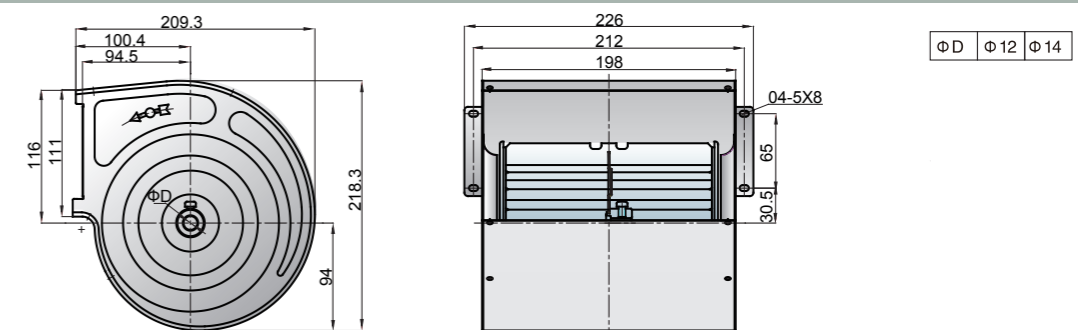
经认证的性能是B类安装:自由入口,管道出口。功率额定值(kW)不包括传输损失。各项性能额定值不包括附属物(附件)的影响。所示A加权声音性能额定值已按AMCA International标准301计算。所示值为安装类型B:自由入口,管道出口的声功率级(入口L_{WA})。



外形尺寸 Overall Size



外形尺寸 Overall Size



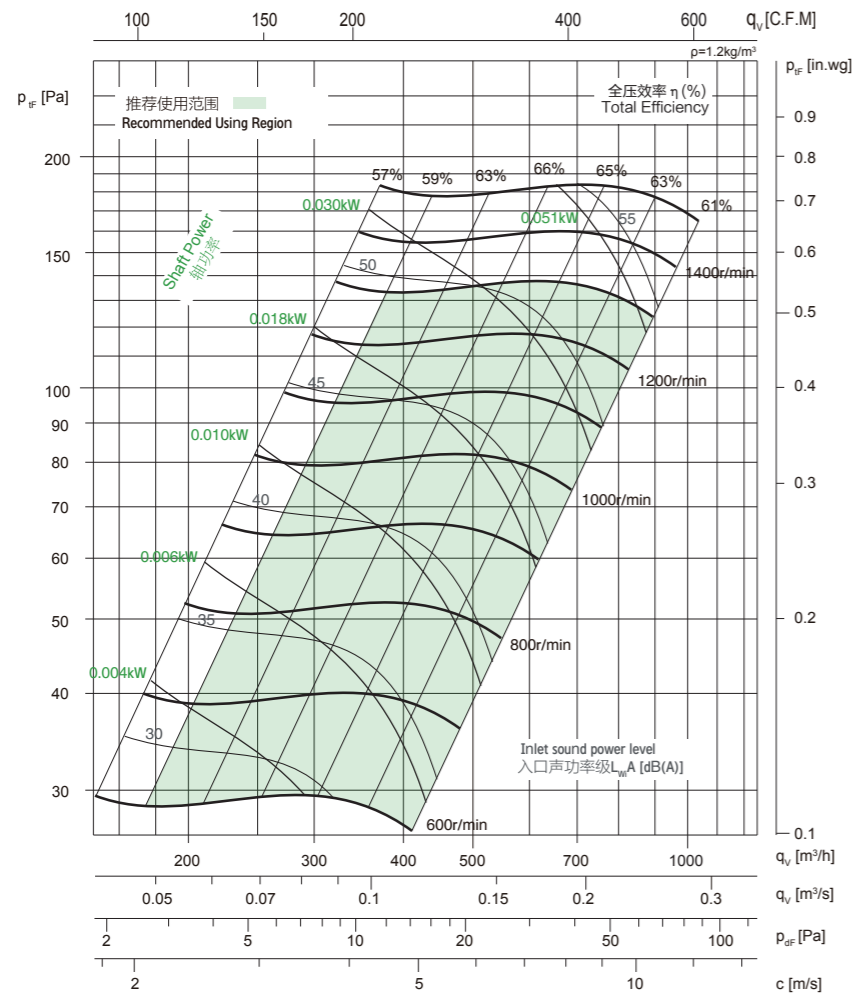
技术参数 Technical Data

Wheel diameter	叶轮直径	D = 145 mm	Fan weight	风机质量	m = 1.01 kg
Moment of inertia	转动惯量	J = 0.002 kg·m ²	Speed limit	极限转速	n _{max} = 1300 r/min

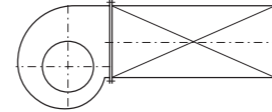
性能曲线 Performance Curves

Performance certified is for installation type B: free inlet, ducted outlet. Power rating (kW) does not include transmission losses. Performance ratings do not include the effects of appurtenances (accessories). The A-weighted sound ratings shown have been calculated per AMCA International Standard 301. Values shown are for inlet L_{WA} sound power levels for installation type B: free inlet, ducted outlet.

经认证的性能是B类安装:自由入口,管道出口。功率额定值(kW)不包括传输损失。各项性能额定值不包括附属物(附件)的影响。所示A加权声音性能额定值已按AMCA International标准301计算。所示值为安装类型B:自由入口,管道出口的声功率级(入口L_{WA})。



Measured in installation B according to AMCA 211:



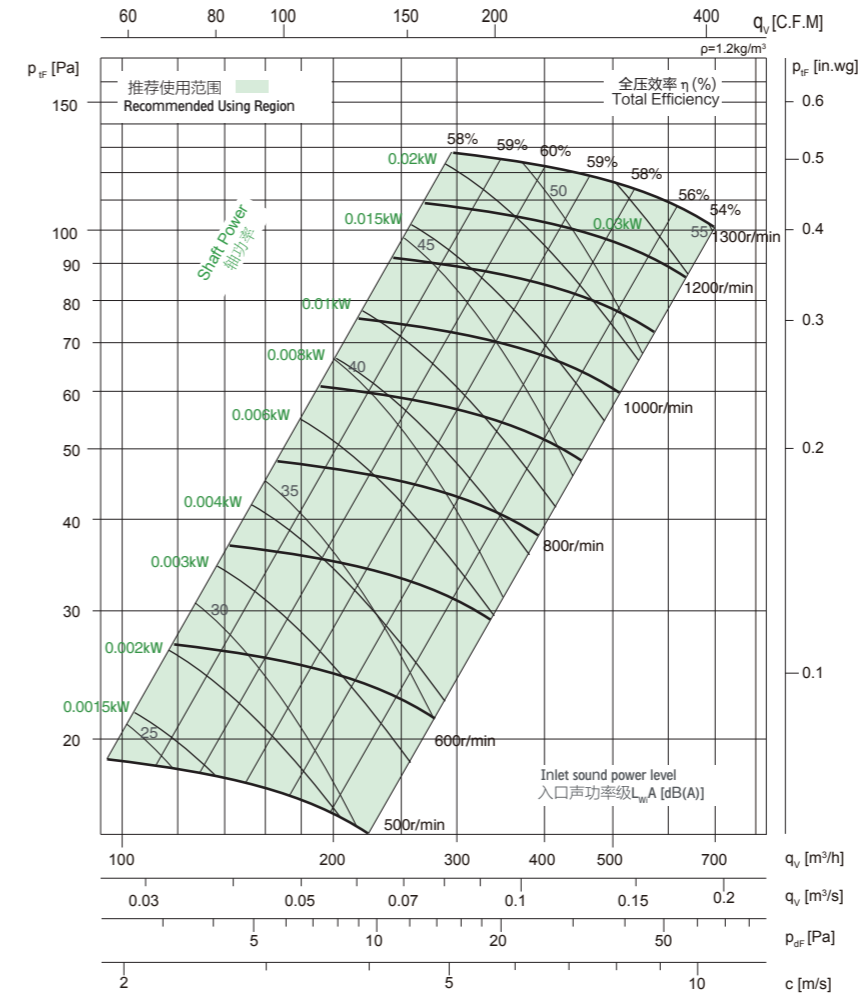
技术参数 Technical Data

Wheel diameter	叶轮直径	D = 150 mm	Fan weight	风机质量	m = 1.07 kg
Moment of inertia	转动惯量	J = 0.002 kg·m ²	Speed limit	极限转速	n _{max} = 1300 r/min

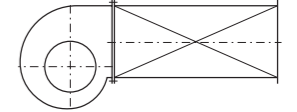
性能曲线 Performance Curves

Performance certified is for installation type B: free inlet, ducted outlet. Power rating (kW) does not include transmission losses. Performance ratings do not include the effects of appurtenances (accessories). The A-weighted sound ratings shown have been calculated per AMCA International Standard 301. Values shown are for inlet L_{WA} sound power levels for installation type B: free inlet, ducted outlet.

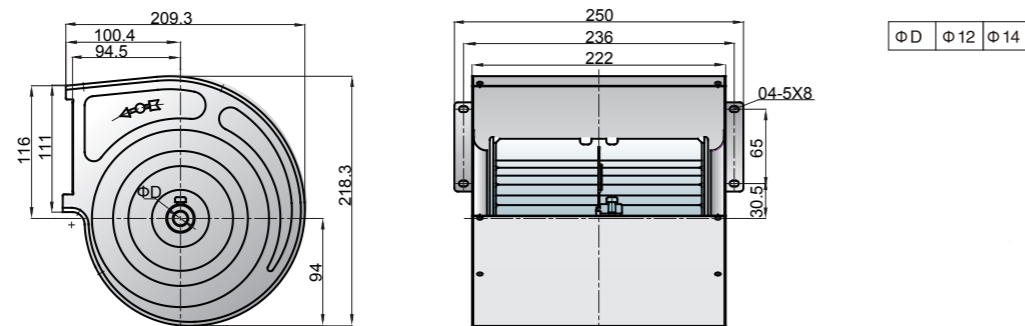
经认证的性能是B类安装:自由入口,管道出口。功率额定值(kW)不包括传输损失。各项性能额定值不包括附属物(附件)的影响。所示A加权声音性能额定值已按AMCA International标准301计算。所示值为安装类型B:自由入口,管道出口的声功率级(入口L_{WA})。



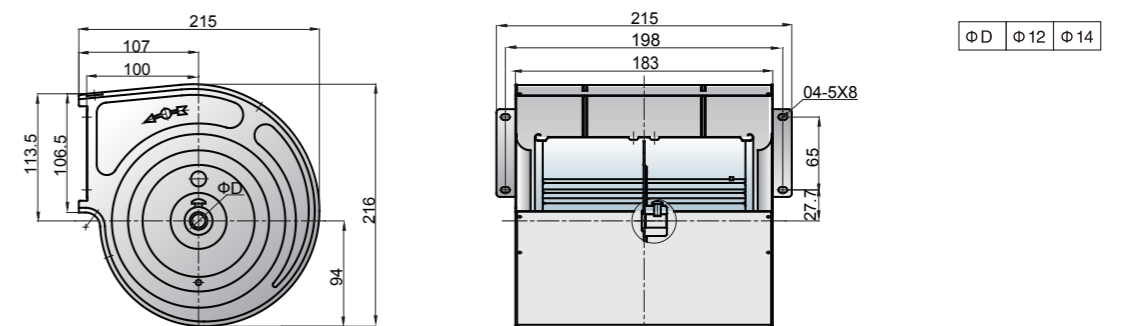
Measured in installation B according to AMCA 211:



外形尺寸 Overall Size



外形尺寸 Overall Size



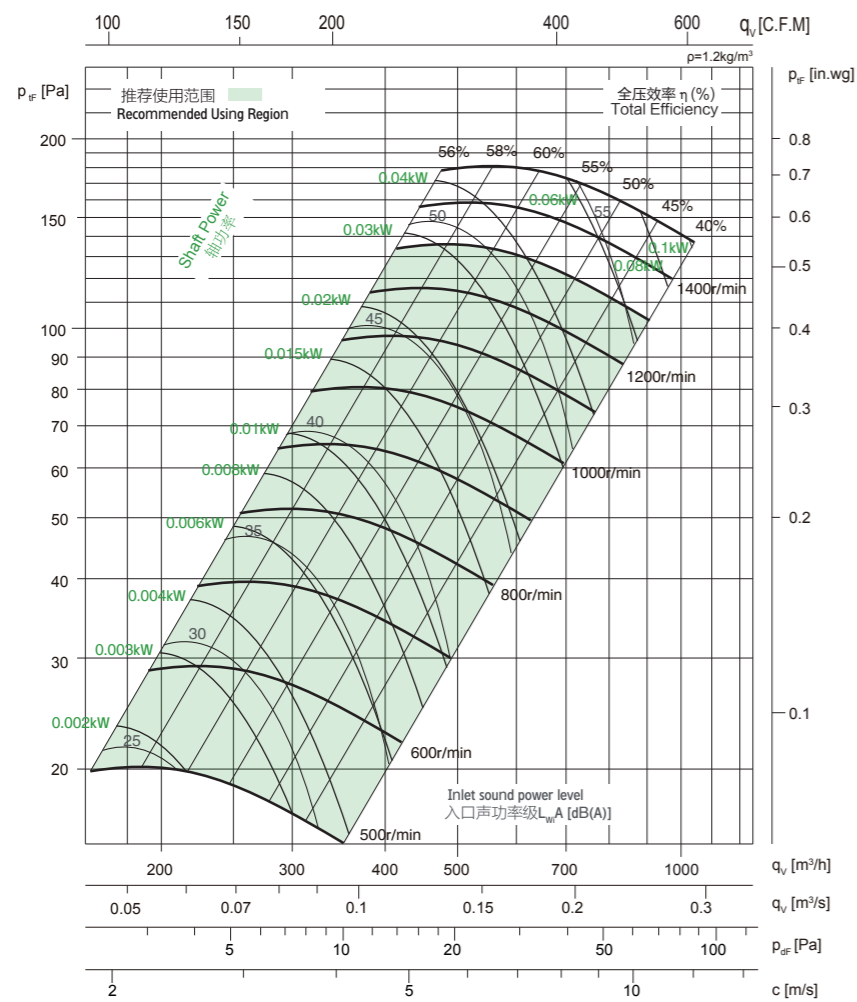
技术参数 Technical Data

Wheel diameter	叶轮直径	D = 150 mm	Fan weight	风机质量	m = 1.30 kg
Moment of inertia	转动惯量	J = 0.002 kg m ²	Speed limit	极限转速	n _{max} = 1300 r/min

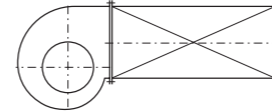
性能曲线 Performance Curves

Performance certified is for installation type B: free inlet, ducted outlet. Power rating (kW) does not include transmission losses. Performance ratings do not include the effects of appurtenances (accessories). The A-weighted sound ratings shown have been calculated per AMCA International Standard 301. Values shown are for inlet L_{WA} sound power levels for installation type B: free inlet, ducted outlet.

经认证的性能是B类安装:自由入口,管道出口。功率额定值(kW)不包括传输损失。各项性能额定值不包括附属物(附件)的影响。所示A加权声音性能额定值已按AMCA International标准301计算。所示值为安装类型B:自由入口,管道出口的声功率级(入口L_{WA})。



Measured in installation B according to AMCA 211:



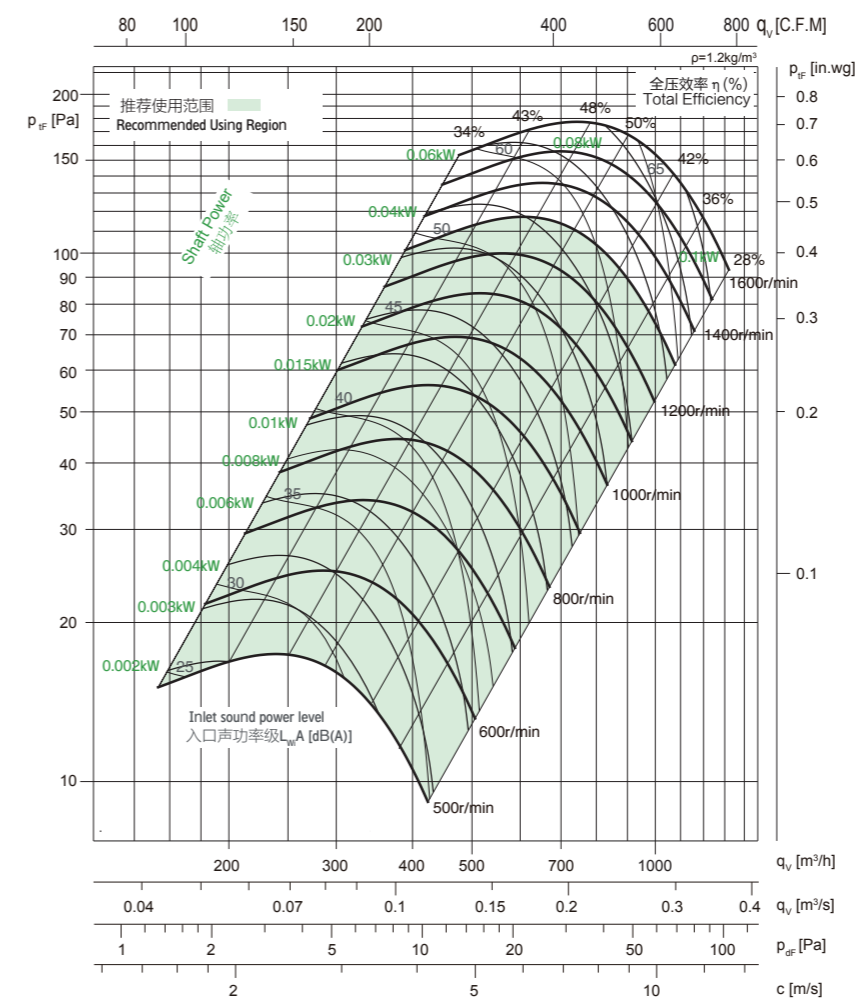
技术参数 Technical Data

Wheel diameter	叶轮直径	D = 150 mm	Fan weight	风机质量	m = 1.43 kg
Moment of inertia	转动惯量	J = 0.003 kg m ²	Speed limit	极限转速	n _{max} = 1300 r/min

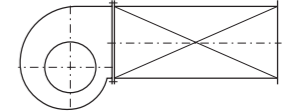
性能曲线 Performance Curves

Performance certified is for installation type B: free inlet, ducted outlet. Power rating (kW) does not include transmission losses. Performance ratings do not include the effects of appurtenances (accessories). The A-weighted sound ratings shown have been calculated per AMCA International Standard 301. Values shown are for inlet L_{WA} sound power levels for installation type B: free inlet, ducted outlet.

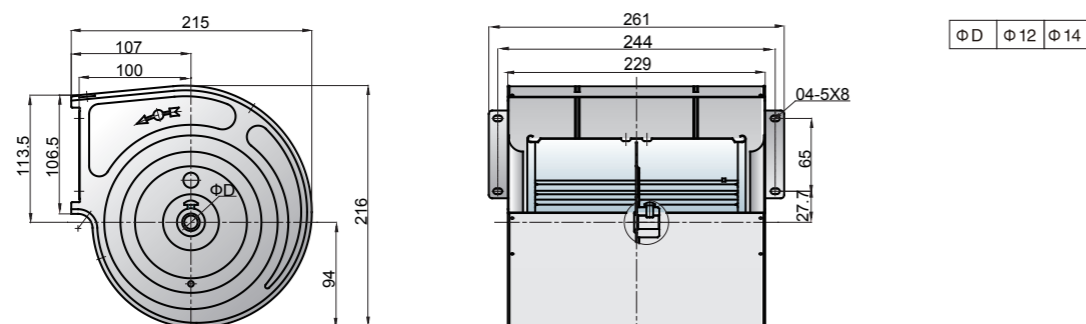
经认证的性能是B类安装:自由入口,管道出口。功率额定值(kW)不包括传输损失。各项性能额定值不包括附属物(附件)的影响。所示A加权声音性能额定值已按AMCA International标准301计算。所示值为安装类型B:自由入口,管道出口的声功率级(入口L_{WA})。



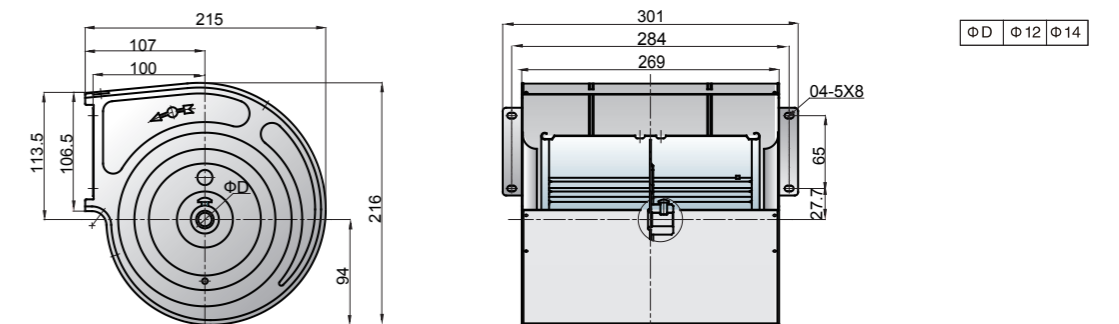
Measured in installation B according to AMCA 211:



外形尺寸 Overall Size



外形尺寸 Overall Size



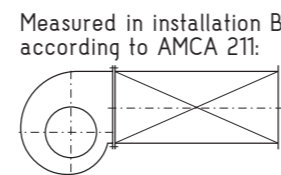
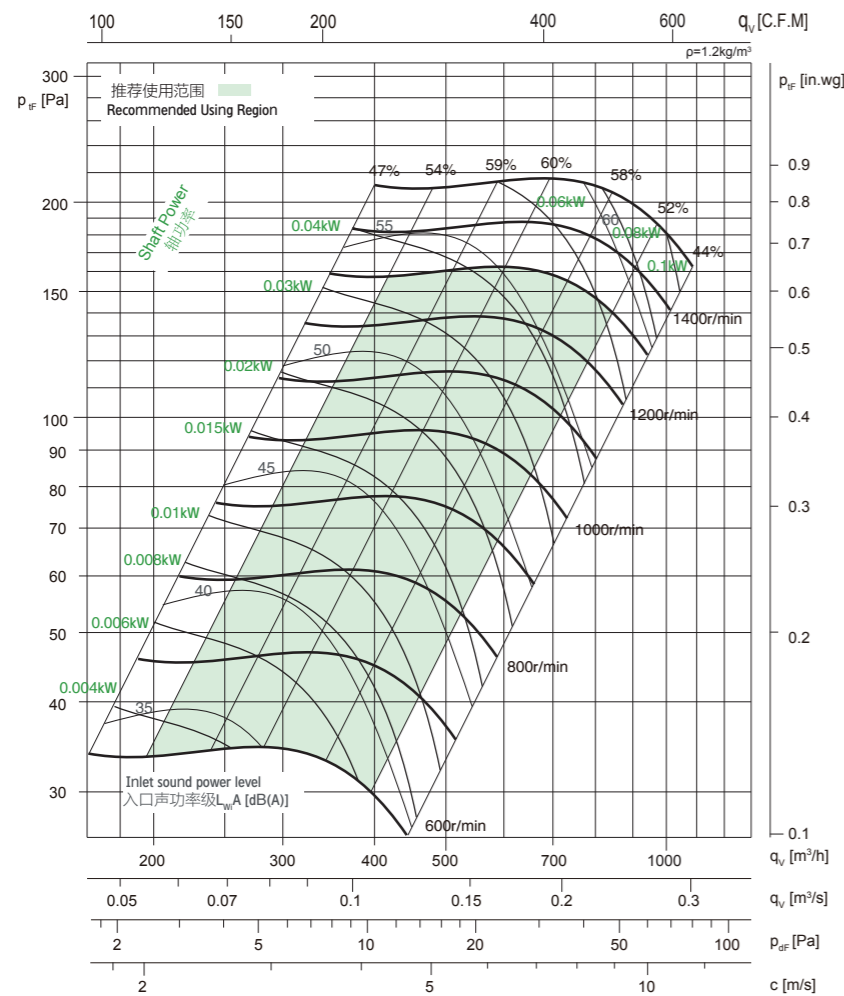
技术参数 Technical Data

Wheel diameter	叶轮直径	D = 160 mm	Fan weight	风机质量	m = 1.27 kg
Moment of inertia	转动惯量	J = 0.003 kg·m ²	Speed limit	极限转速	n _{max} = 1300 r/min

性能曲线 Performance Curves

Performance certified is for installation type B: free inlet, ducted outlet. Power rating (kW) does not include transmission losses. Performance ratings do not include the effects of appurtenances (accessories). The A-weighted sound ratings shown have been calculated per AMCA International Standard 301. Values shown are for inlet L_{WA} sound power levels for installation type B: free inlet, ducted outlet.

经认证的性能是B类安装：自由入口，管道出口。功率额定值(kW)不包括传输损失。各项性能额定值不包括附属物(附件)的影响。所示A加权声音性能额定值已按AMCA International标准301计算。所示值为安装类型B：自由入口，管道出口的声功率级(入口L_{WA})。



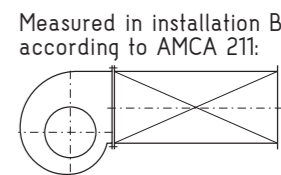
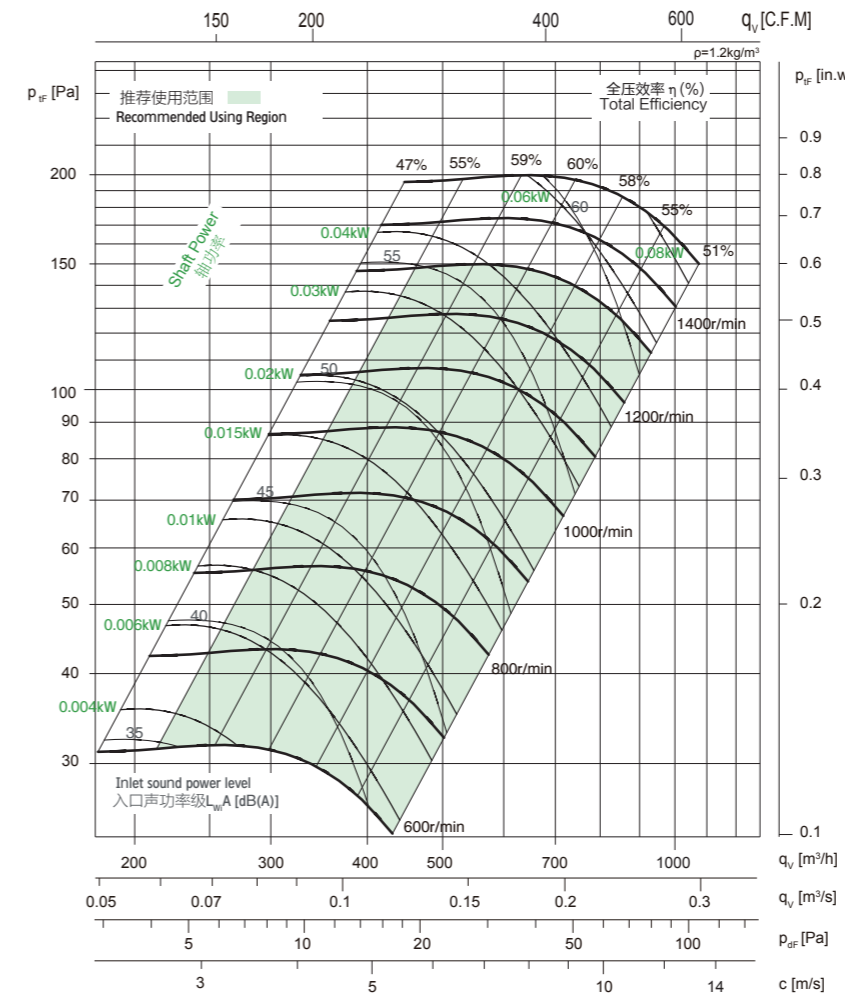
技术参数 Technical Data

Wheel diameter	叶轮直径	D = 160 mm	Fan weight	风机质量	m = 1.38 kg
Moment of inertia	转动惯量	J = 0.003 kg·m ²	Speed limit	极限转速	n _{max} = 1300 r/min

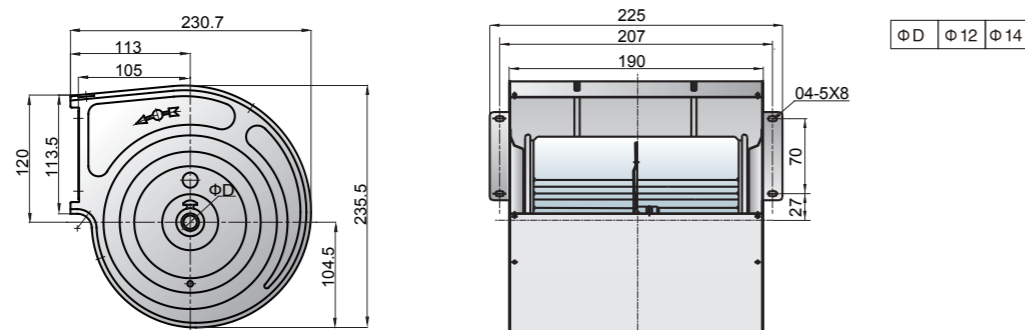
性能曲线 Performance Curves

Performance certified is for installation type B: free inlet, ducted outlet. Power rating (kW) does not include transmission losses. Performance ratings do not include the effects of appurtenances (accessories). The A-weighted sound ratings shown have been calculated per AMCA International Standard 301. Values shown are for inlet L_{WA} sound power levels for installation type B: free inlet, ducted outlet.

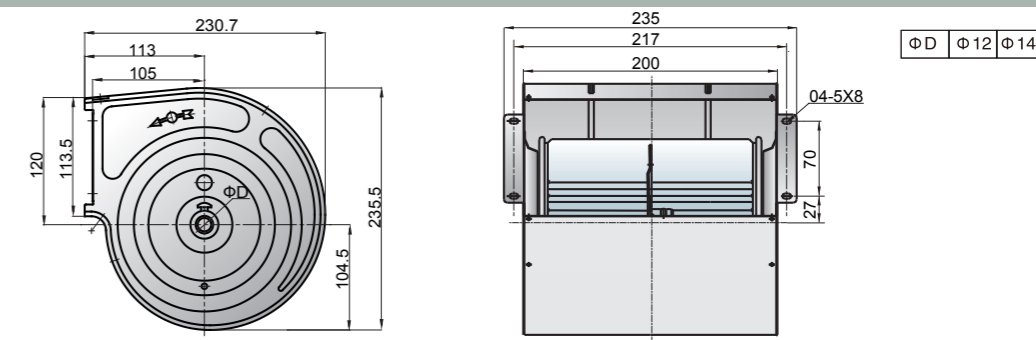
经认证的性能是B类安装：自由入口，管道出口。功率额定值(kW)不包括传输损失。各项性能额定值不包括附属物(附件)的影响。所示A加权声音性能额定值已按AMCA International标准301计算。所示值为安装类型B：自由入口，管道出口的声功率级(入口L_{WA})。



外形尺寸 Overall Size



外形尺寸 Overall Size



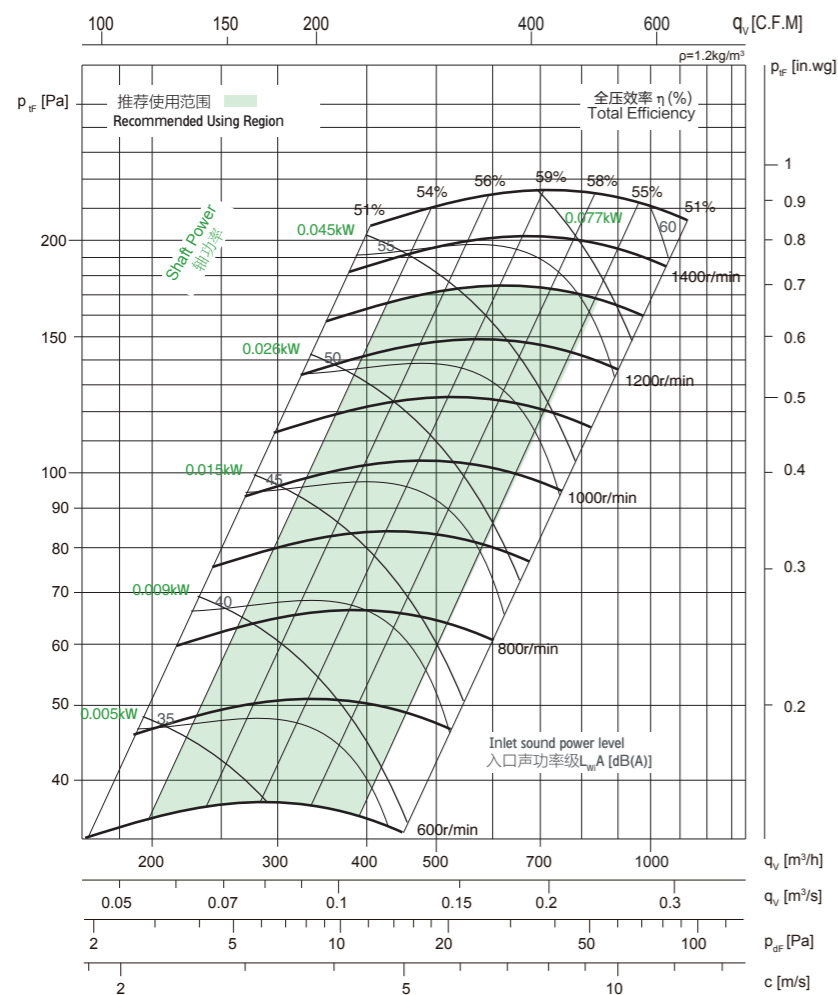
技术参数 Technical Data

Wheel diameter	叶轮直径	D = 160 mm	Fan weight	风机质量	m = 1.46 kg
Moment of inertia	转动惯量	J = 0.004 kg·m ²	Speed limit	极限转速	n _{max} = 1300 r/min

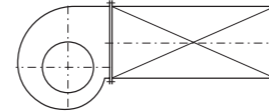
性能曲线 Performance Curves

Performance certified is for installation type B: free inlet, ducted outlet. Power rating (kW) does not include transmission losses. Performance ratings do not include the effects of appurtenances (accessories). The A-weighted sound ratings shown have been calculated per AMCA International Standard 301. Values shown are for inlet L_{WA} sound power levels for installation type B: free inlet, ducted outlet.

经认证的性能是B类安装:自由入口,管道出口。功率额定值(kW)不包括传输损失。各项性能额定值不包括附属物(附件)的影响。所示A加权声音性能额定值已按AMCA International标准301计算。所示值为安装类型B:自由入口,管道出口的声功率级(入口L_{WA})。



Measured in installation B according to AMCA 211:



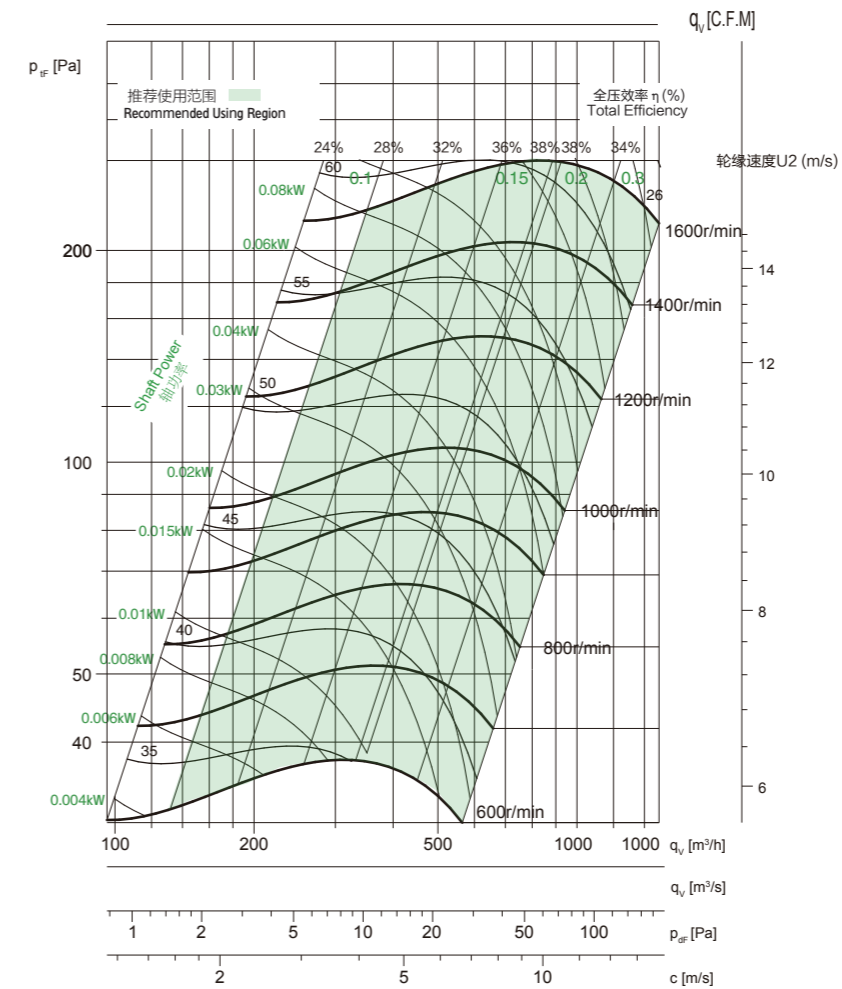
技术参数 Technical Data

Wheel diameter	叶轮直径	D = 180 mm	Fan weight	风机质量	m = 1.52 kg
Moment of inertia	转动惯量	J = 0.01 kg·m ²	Speed limit	极限转速	n _{max} = 1400 r/min

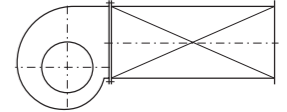
性能曲线 Performance Curves

Performance certified is for installation type B: free inlet, ducted outlet. Power rating (kW) does not include transmission losses. Performance ratings do not include the effects of appurtenances (accessories). The A-weighted sound ratings shown have been calculated per AMCA International Standard 301. Values shown are for inlet L_{WA} sound power levels for installation type B: free inlet, ducted outlet.

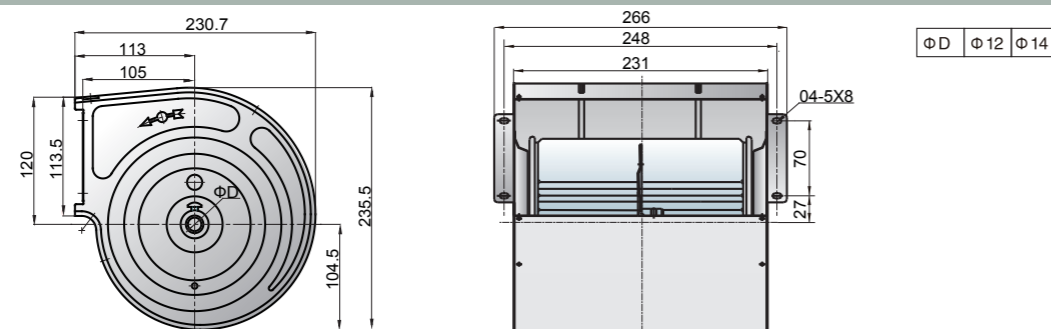
经认证的性能是B类安装:自由入口,管道出口。功率额定值(kW)不包括传输损失。各项性能额定值不包括附属物(附件)的影响。所示A加权声音性能额定值已按AMCA International标准301计算。所示值为安装类型B:自由入口,管道出口的声功率级(入口L_{WA})。



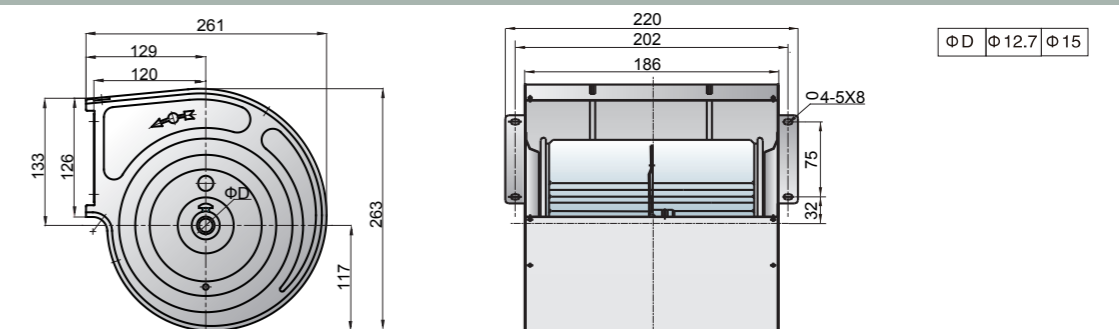
Measured in installation B according to AMCA 211:



外形尺寸 Overall Size



外形尺寸 Overall Size



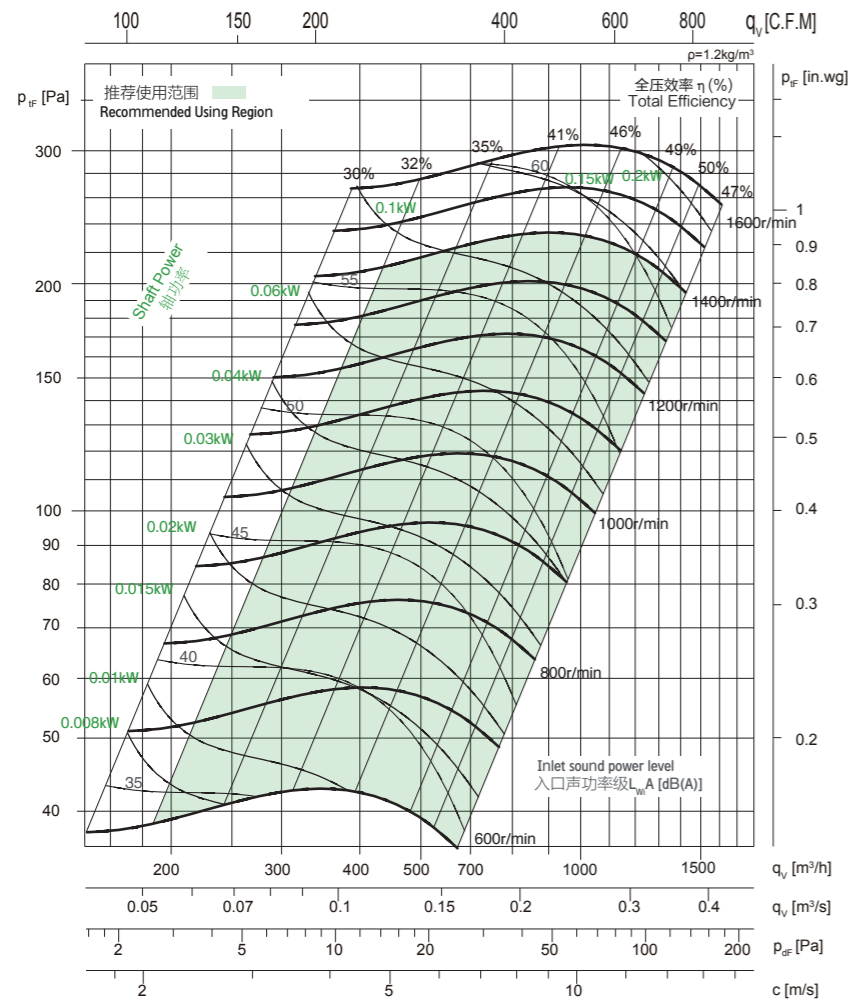
技术参数 Technical Data

Wheel diameter	叶轮直径	D = 180 mm	Fan weight	风机质量	m = 1.65 kg
Moment of inertia	转动惯量	J = 0.006 kg·m ²	Speed limit	极限转速	n _{max} = 1400 r/min

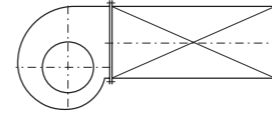
性能曲线 Performance Curves

Performance certified is for installation type B: free inlet, ducted outlet. Power rating (kW) does not include transmission losses. Performance ratings do not include the effects of appurtenances (accessories). The A-weighted sound ratings shown have been calculated per AMCA International Standard 301. Values shown are for inlet L_{WA} sound power levels for installation type B: free inlet, ducted outlet.

经认证的性能是B类安装:自由入口,管道出口。功率额定值(kW)不包括传输损失。各项性能额定值不包括附属物(附件)的影响。所示A加权声音性能额定值已按AMCA International标准301计算。所示值为安装类型B:自由入口,管道出口的声功率级(入口L_{WA})。



Measured in installation B according to AMCA 211:



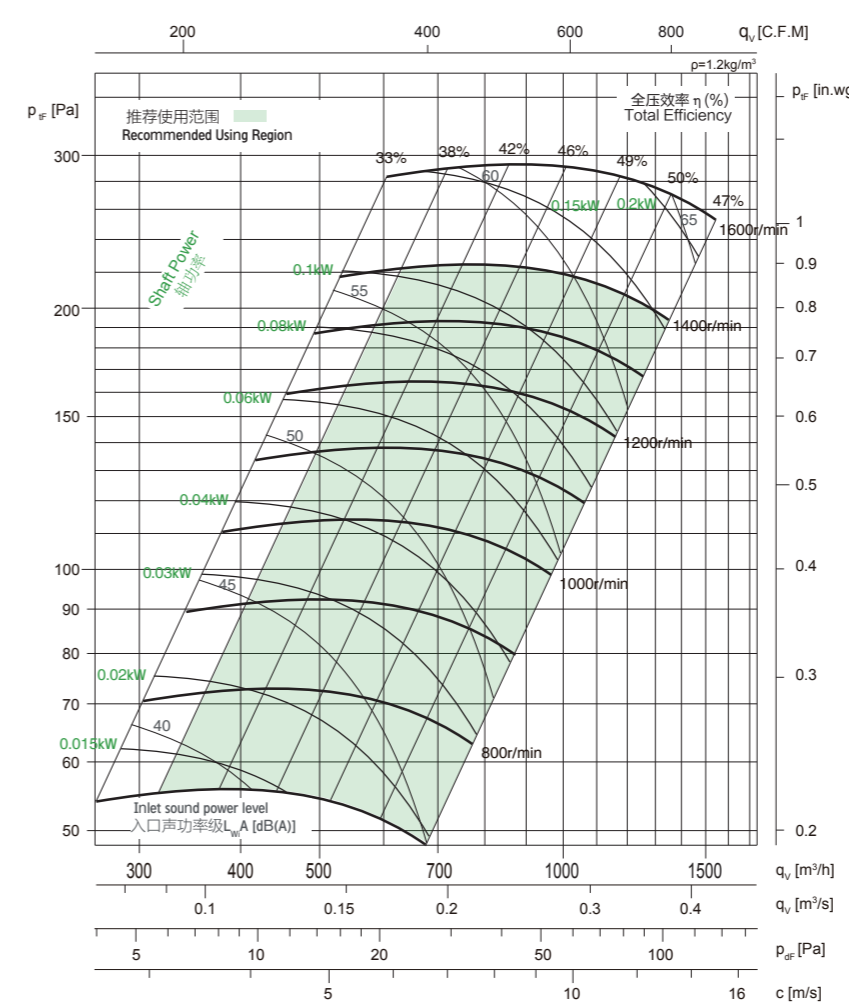
技术参数 Technical Data

Wheel diameter	叶轮直径	D = 180 mm	Fan weight	风机质量	m = 1.76 kg
Moment of inertia	转动惯量	J = 0.006 kg·m ²	Speed limit	极限转速	n _{max} = 1400 r/min

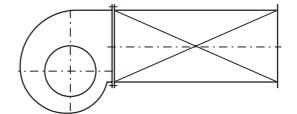
性能曲线 Performance Curves

Performance certified is for installation type B: free inlet, ducted outlet. Power rating (kW) does not include transmission losses. Performance ratings do not include the effects of appurtenances (accessories). The A-weighted sound ratings shown have been calculated per AMCA International Standard 301. Values shown are for inlet L_{WA} sound power levels for installation type B: free inlet, ducted outlet.

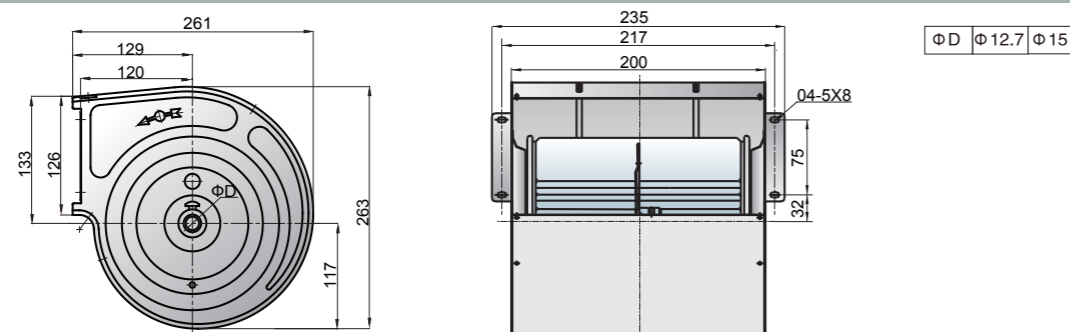
经认证的性能是B类安装:自由入口,管道出口。功率额定值(kW)不包括传输损失。各项性能额定值不包括附属物(附件)的影响。所示A加权声音性能额定值已按AMCA International标准301计算。所示值为安装类型B:自由入口,管道出口的声功率级(入口L_{WA})。



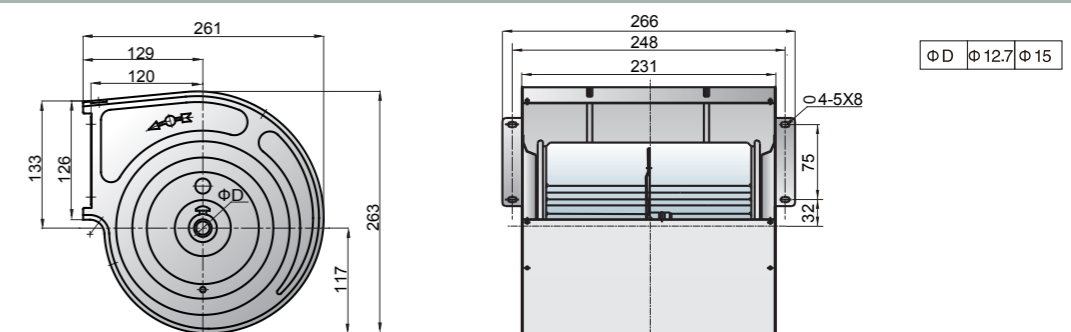
Measured in installation B according to AMCA 211:



外形尺寸 Overall Size



外形尺寸 Overall Size



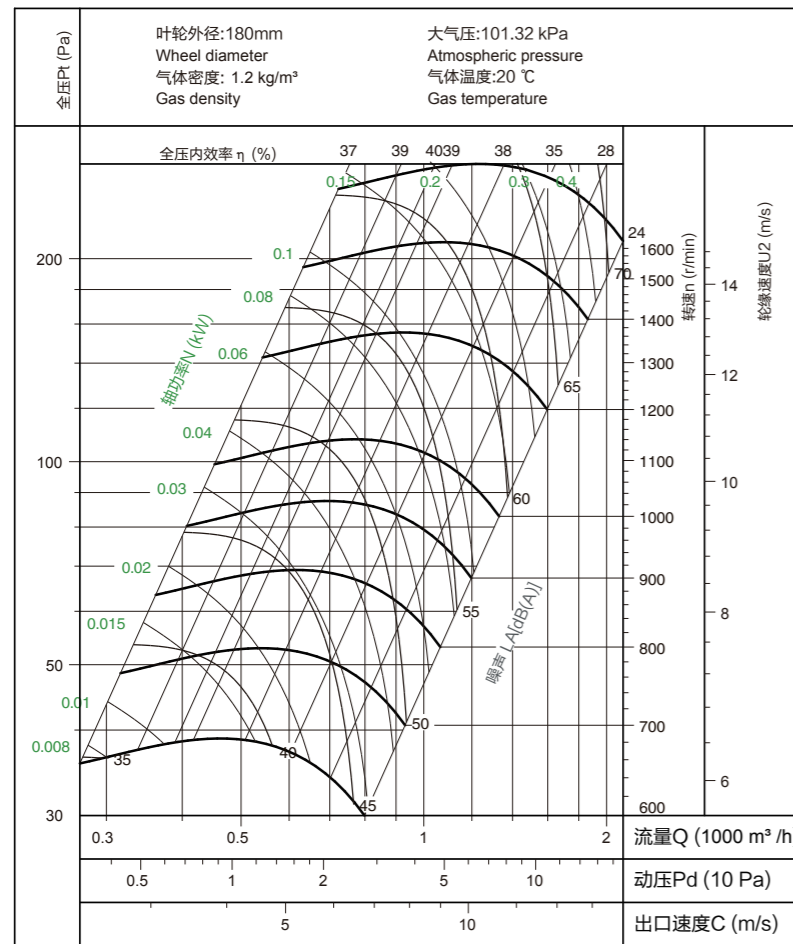
技术参数 Technical Data

Wheel diameter	叶轮直径	D = 180 mm	Fan weight	风机质量	m = 1.87 kg
Moment of inertia	转动惯量	J = 0.01 kg·m ²	Speed limit	极限转速	n _{max} = 1400 r/min

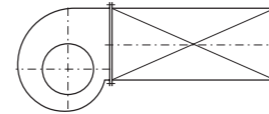
性能曲线 Performance Curves

Performance certified is for installation type B: free inlet, ducted outlet. Power rating (kW) does not include transmission losses. Performance ratings do not include the effects of appurtenances (accessories). The A-weighted sound ratings shown have been calculated per AMCA International Standard 301. Values shown are for inlet L_{WA} sound power levels for installation type B: free inlet, ducted outlet.

经认证的性能是B类安装:自由入口,管道出口。功率额定值(kW)不包括传输损失。各项性能额定值不包括附属物(附件)的影响。所示A加权声音性能额定值已按AMCA International标准301计算。所示值为安装类型B:自由入口,管道出口的声功率级(入口L_{WA})。



Measured in installation B according to AMCA 211:



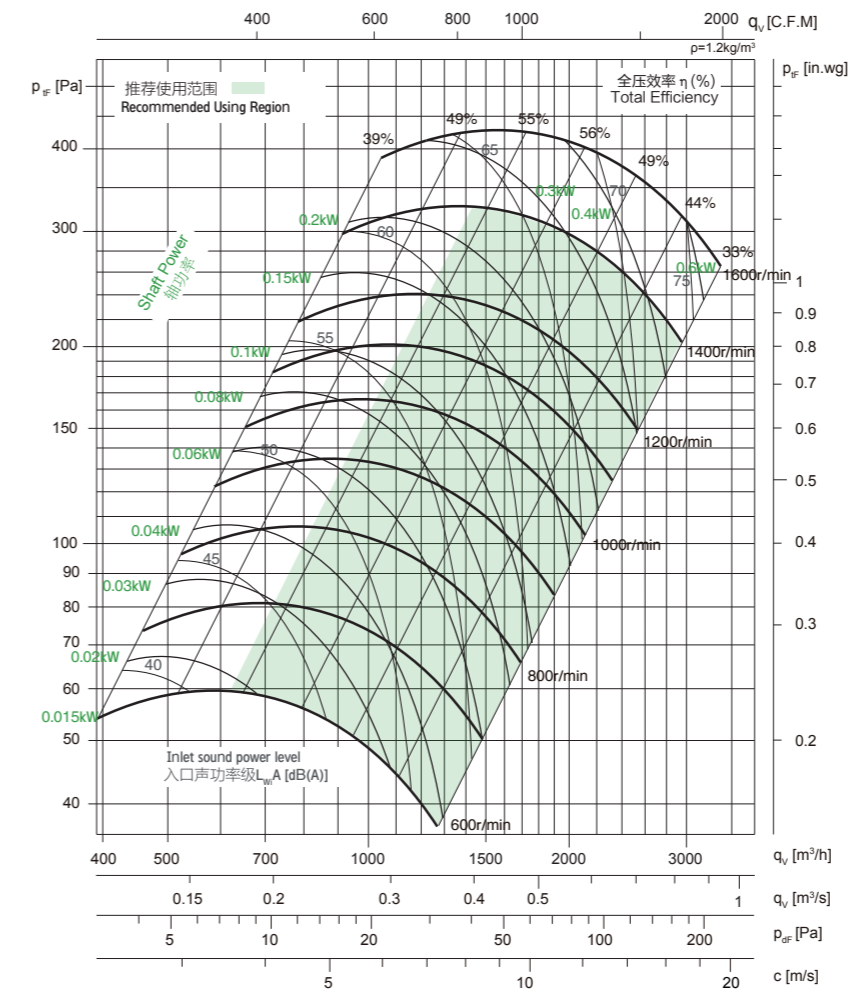
技术参数 Technical Data

Wheel diameter	叶轮直径	D = 200 mm	Fan weight	风机质量	m = 3.3 kg
Moment of inertia	转动惯量	J = 0.01 kg·m ²	Speed limit	极限转速	n _{max} = 1400 r/min

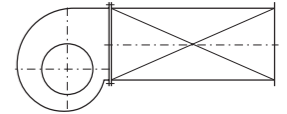
性能曲线 Performance Curves

Performance certified is for installation type B: free inlet, ducted outlet. Power rating (kW) does not include transmission losses. Performance ratings do not include the effects of appurtenances (accessories). The A-weighted sound ratings shown have been calculated per AMCA International Standard 301. Values shown are for inlet L_{WA} sound power levels for installation type B: free inlet, ducted outlet.

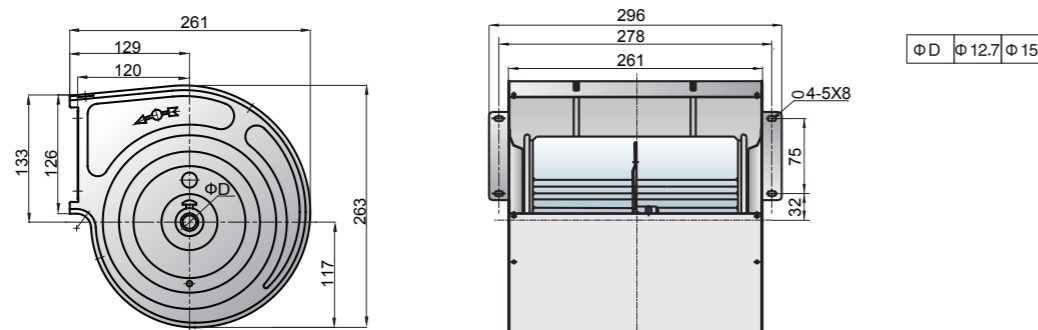
经认证的性能是B类安装:自由入口,管道出口。功率额定值(kW)不包括传输损失。各项性能额定值不包括附属物(附件)的影响。所示A加权声音性能额定值已按AMCA International标准301计算。所示值为安装类型B:自由入口,管道出口的声功率级(入口L_{WA})。



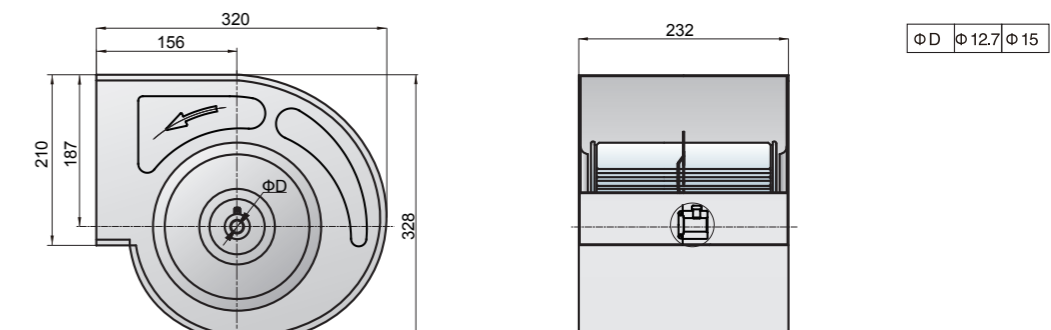
Measured in installation B according to AMCA 211:



外形尺寸 Overall Size



外形尺寸 Overall Size



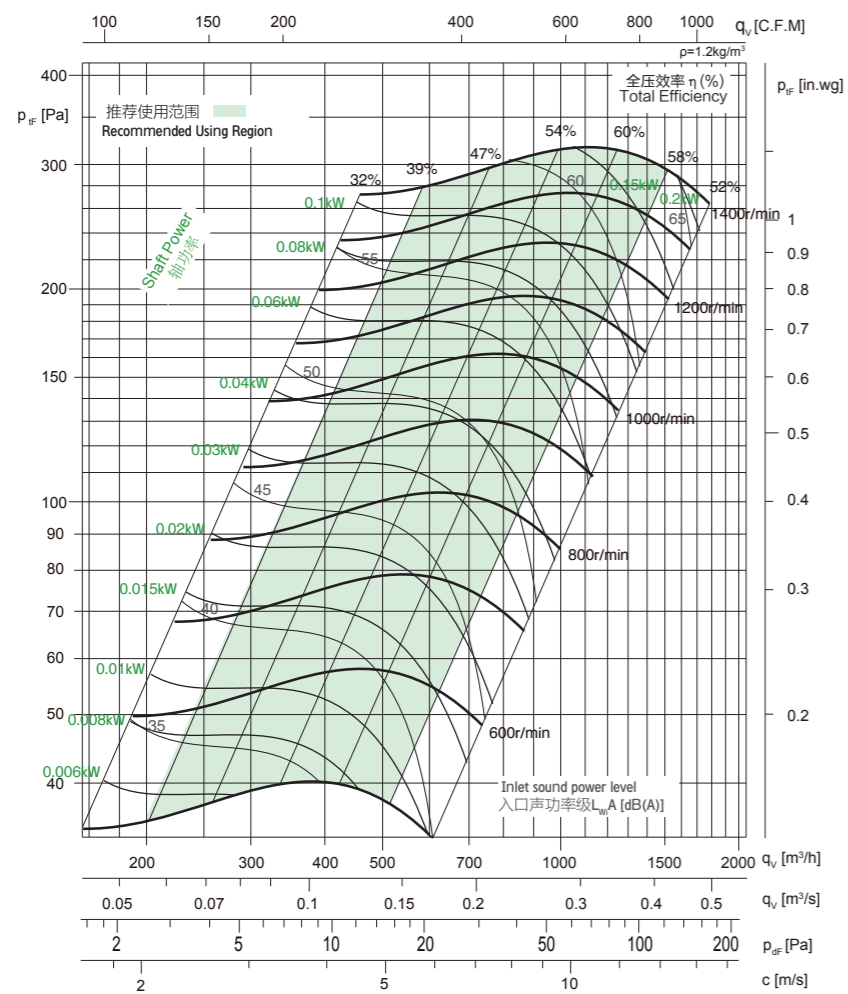
技术参数 Technical Data

Wheel diameter	叶轮直径	D = 200 mm	Fan weight	风机质量	m = 2.4 kg
Moment of inertia	转动惯量	J = 0.01 kg·m ²	Speed limit	极限转速	n _{max} = 1400 r/min

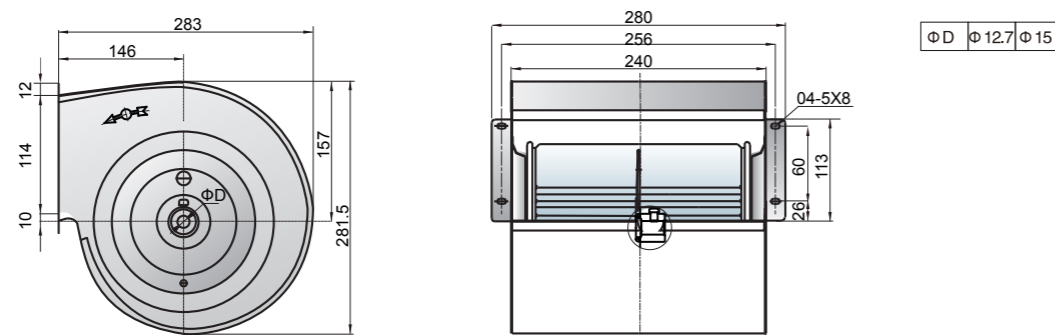
性能曲线 Performance Curves

Performance certified is for installation type B: free inlet, ducted outlet. Power rating (kW) does not include transmission losses. Performance ratings do not include the effects of appurtenances (accessories). The A-weighted sound ratings shown have been calculated per AMCA International Standard 301. Values shown are for inlet L_{WA} sound power levels for installation type B: free inlet, ducted outlet.

经认证的性能是B类安装:自由入口,管道出口。功率额定值(kW)不包括传输损失。各项性能额定值不包括附属物(附件)的影响。所示A加权声音性能额定值已按AMCA International标准301计算。所示值为安装类型B:自由入口,管道出口的声功率级(入口L_{WA})。



外形尺寸 Overall Size



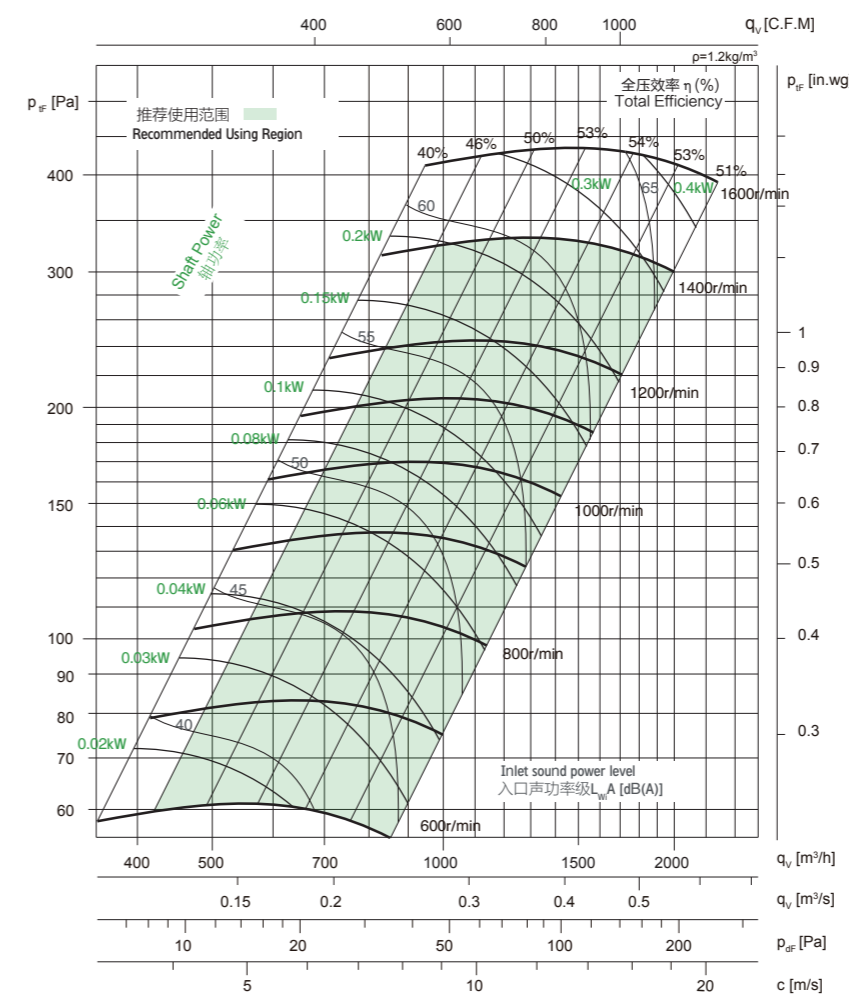
技术参数 Technical Data

Wheel diameter	叶轮直径	D = 200 mm	Fan weight	风机质量	m = 2.66 kg
Moment of inertia	转动惯量	J = 0.01 kg·m ²	Speed limit	极限转速	n _{max} = 1400 r/min

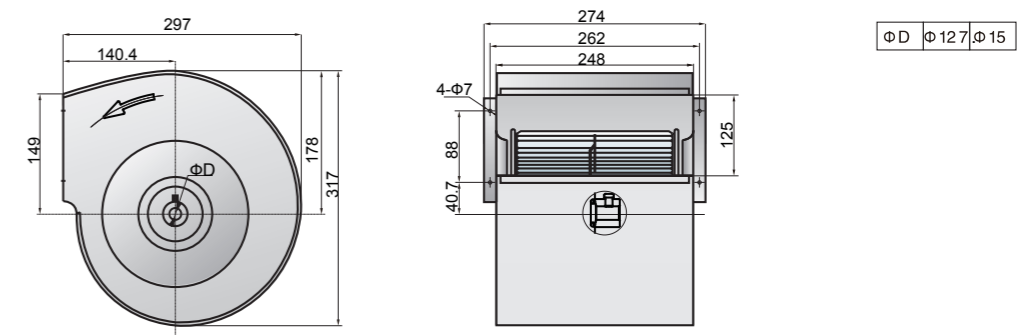
性能曲线 Performance Curves

Performance certified is for installation type B: free inlet, ducted outlet. Power rating (kW) does not include transmission losses. Performance ratings do not include the effects of appurtenances (accessories). The A-weighted sound ratings shown have been calculated per AMCA International Standard 301. Values shown are for inlet L_{WA} sound power levels for installation type B: free inlet, ducted outlet.

经认证的性能是B类安装:自由入口,管道出口。功率额定值(kW)不包括传输损失。各项性能额定值不包括附属物(附件)的影响。所示A加权声音性能额定值已按AMCA International标准301计算。所示值为安装类型B:自由入口,管道出口的声功率级(入口L_{WA})。



外形尺寸 Overall Size



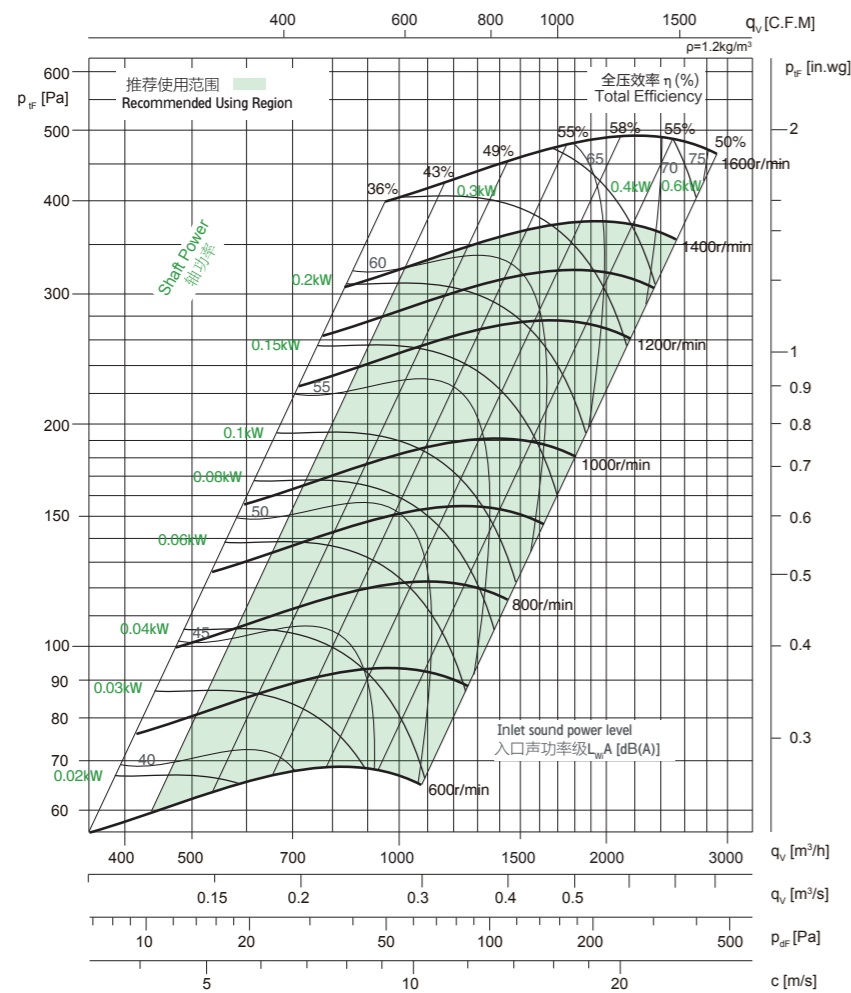
技术参数 Technical Data

Wheel diameter	叶轮直径	D = 200 mm	Fan weight	风机质量	m = 3.49 kg
Moment of inertia	转动惯量	J = 0.01 kg·m ²	Speed limit	极限转速	n _{max} = 1400 r/min

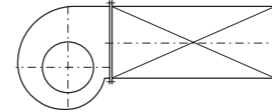
性能曲线 Performance Curves

Performance certified is for installation type B: free inlet, ducted outlet. Power rating (kW) does not include transmission losses. Performance ratings do not include the effects of appurtenances (accessories). The A-weighted sound ratings shown have been calculated per AMCA International Standard 301. Values shown are for inlet L_{WA} sound power levels for installation type B: free inlet, ducted outlet.

经认证的性能是B类安装:自由入口,管道出口。功率额定值(kW)不包括传输损失。各项性能额定值不包括附属物(附件)的影响。所示A加权声音性能额定值已按AMCA International标准301计算。所示值为安装类型B:自由入口,管道出口的声功率级(入口L_{WA})。



Measured in installation B according to AMCA 211:



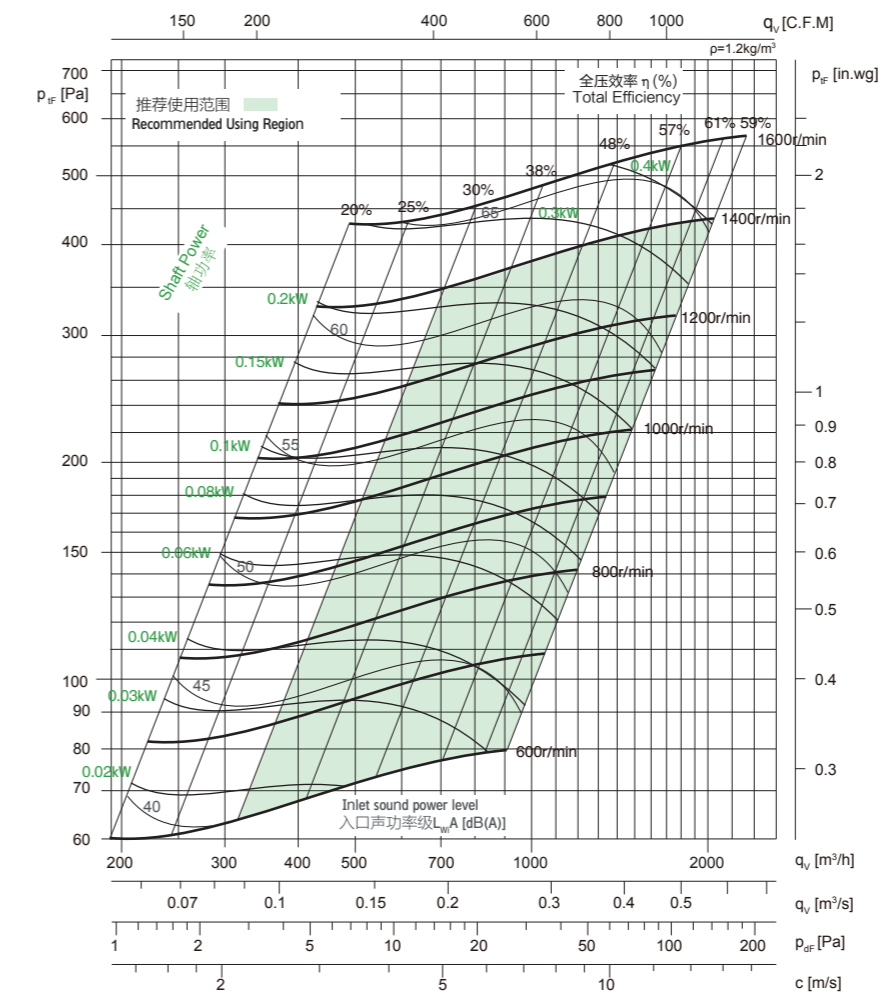
技术参数 Technical Data

Wheel diameter	叶轮直径	D = 225 mm	Fan weight	风机质量	m = 3.33 kg
Moment of inertia	转动惯量	J = 0.013 kg·m ²	Speed limit	极限转速	n _{max} = 1400 r/min

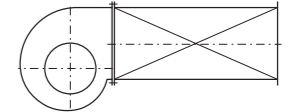
性能曲线 Performance Curves

Performance certified is for installation type B: free inlet, ducted outlet. Power rating (kW) does not include transmission losses. Performance ratings do not include the effects of appurtenances (accessories). The A-weighted sound ratings shown have been calculated per AMCA International Standard 301. Values shown are for inlet L_{WA} sound power levels for installation type B: free inlet, ducted outlet.

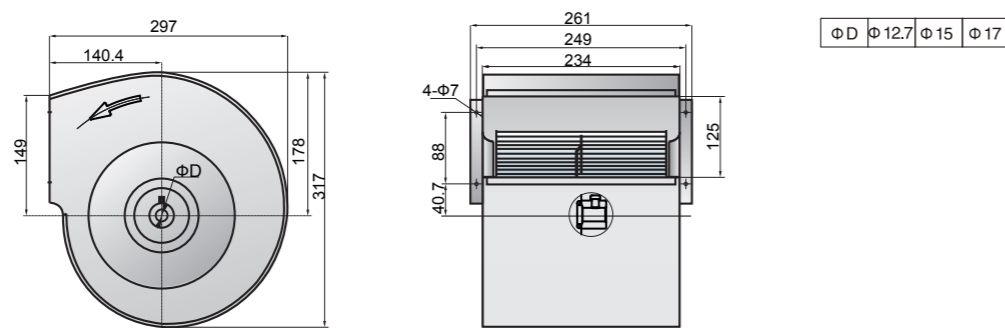
经认证的性能是B类安装:自由入口,管道出口。功率额定值(kW)不包括传输损失。各项性能额定值不包括附属物(附件)的影响。所示A加权声音性能额定值已按AMCA International标准301计算。所示值为安装类型B:自由入口,管道出口的声功率级(入口L_{WA})。



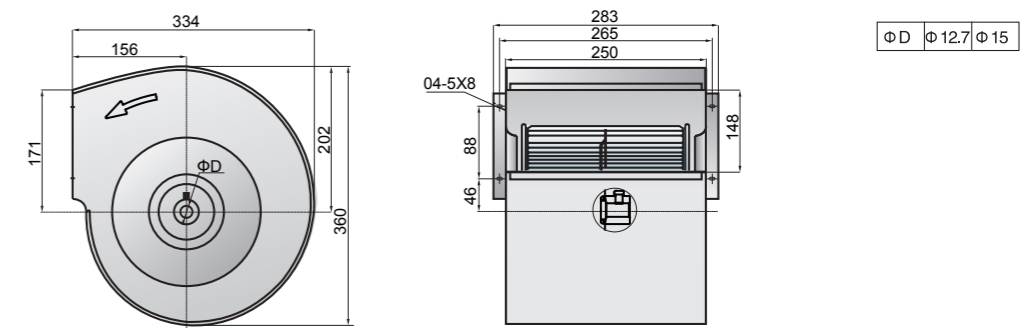
Measured in installation B according to AMCA 211:



外形尺寸 Overall Size



外形尺寸 Overall Size



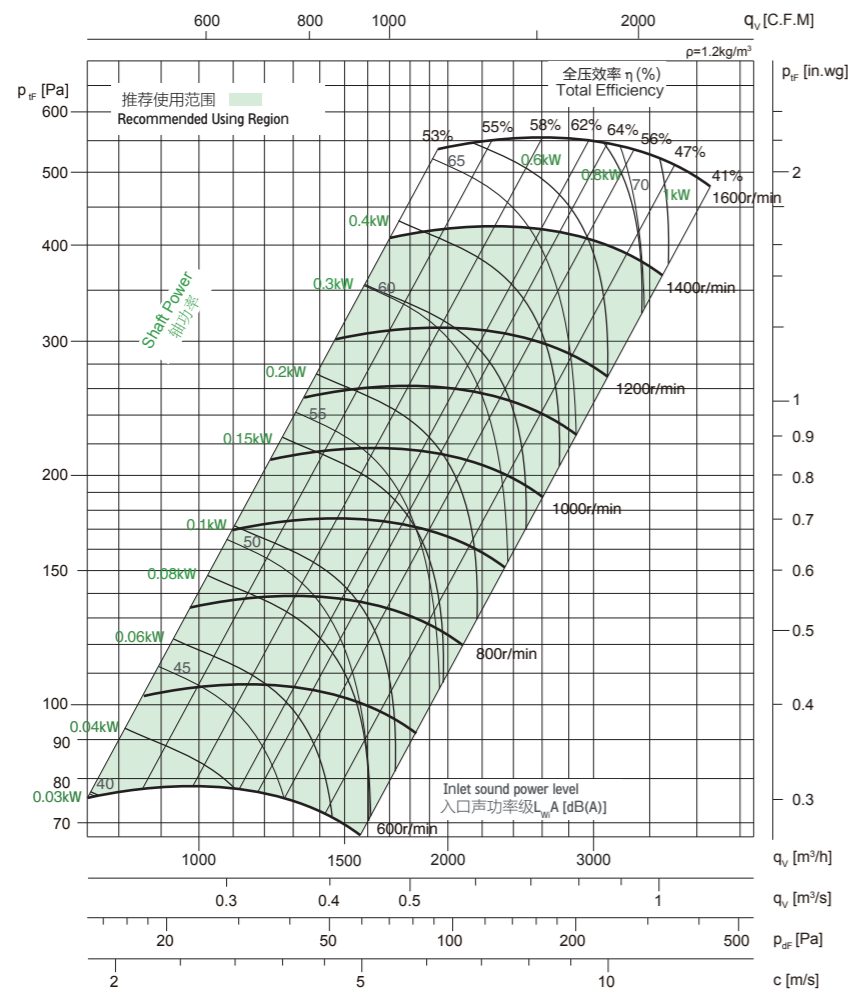
技术参数 Technical Data

Wheel diameter	叶轮直径	D = 225 mm	Fan weight	风机质量	m = 3.75 kg
Moment of inertia	转动惯量	J = 0.014 kg·m ²	Speed limit	极限转速	n _{max} = 1400 r/min

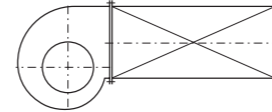
性能曲线 Performance Curves

Performance certified is for installation type B: free inlet, ducted outlet. Power rating (kW) does not include transmission losses. Performance ratings do not include the effects of appurtenances (accessories). The A-weighted sound ratings shown have been calculated per AMCA International Standard 301. Values shown are for inlet L_{WA} sound power levels for installation type B: free inlet, ducted outlet.

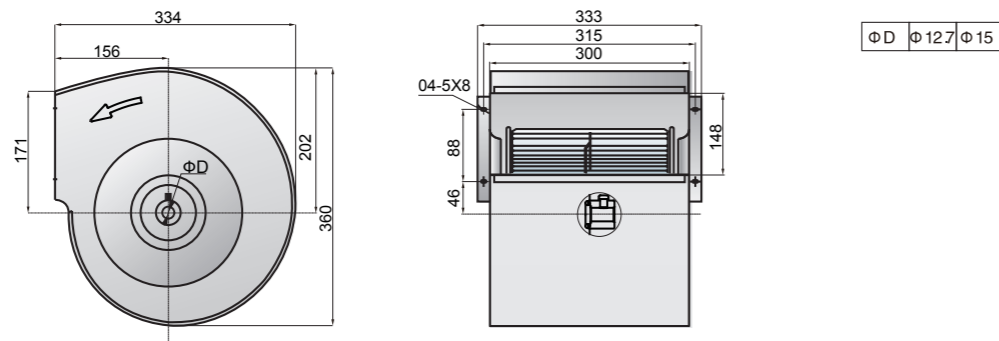
经认证的性能是B类安装:自由入口,管道出口。功率额定值(kW)不包括传输损失。各项性能额定值不包括附属物(附件)的影响。所示A加权声音性能额定值已按AMCA International标准301计算。所示值为安装类型B:自由入口,管道出口的声功率级(入口L_{WA})。



Measured in installation B according to AMCA 211:



外形尺寸 Overall Size



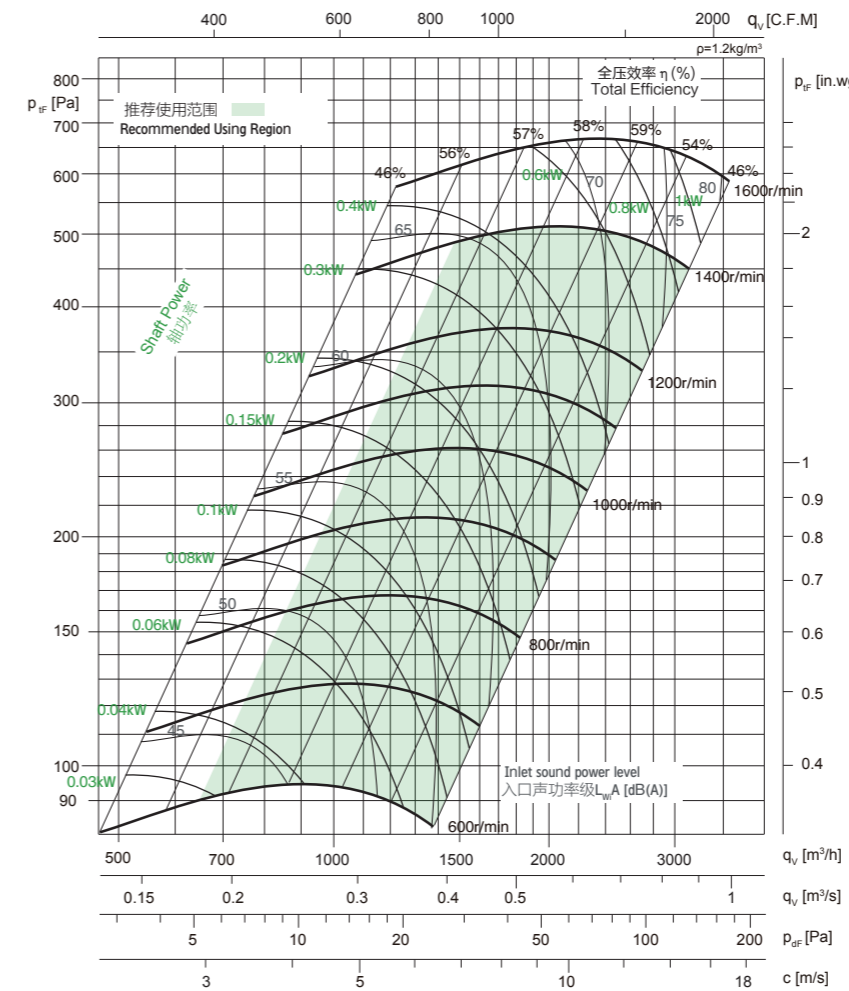
技术参数 Technical Data

Wheel diameter	叶轮直径	D = 250 mm	Fan weight	风机质量	m = 4.4 kg
Moment of inertia	转动惯量	J = 0.016 kg·m ²	Speed limit	极限转速	n _{max} = 1400 r/min

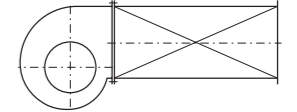
性能曲线 Performance Curves

Performance certified is for installation type B: free inlet, ducted outlet. Power rating (kW) does not include transmission losses. Performance ratings do not include the effects of appurtenances (accessories). The A-weighted sound ratings shown have been calculated per AMCA International Standard 301. Values shown are for inlet L_{WA} sound power levels for installation type B: free inlet, ducted outlet.

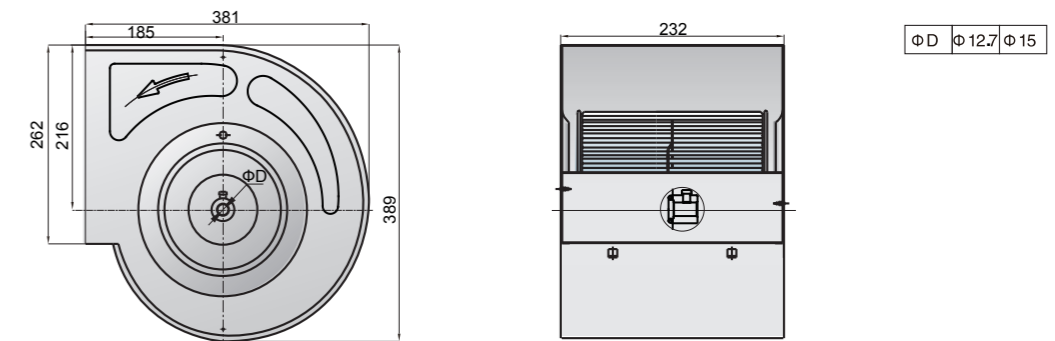
经认证的性能是B类安装:自由入口,管道出口。功率额定值(kW)不包括传输损失。各项性能额定值不包括附属物(附件)的影响。所示A加权声音性能额定值已按AMCA International标准301计算。所示值为安装类型B:自由入口,管道出口的声功率级(入口L_{WA})。



Measured in installation B according to AMCA 211:



外形尺寸 Overall Size



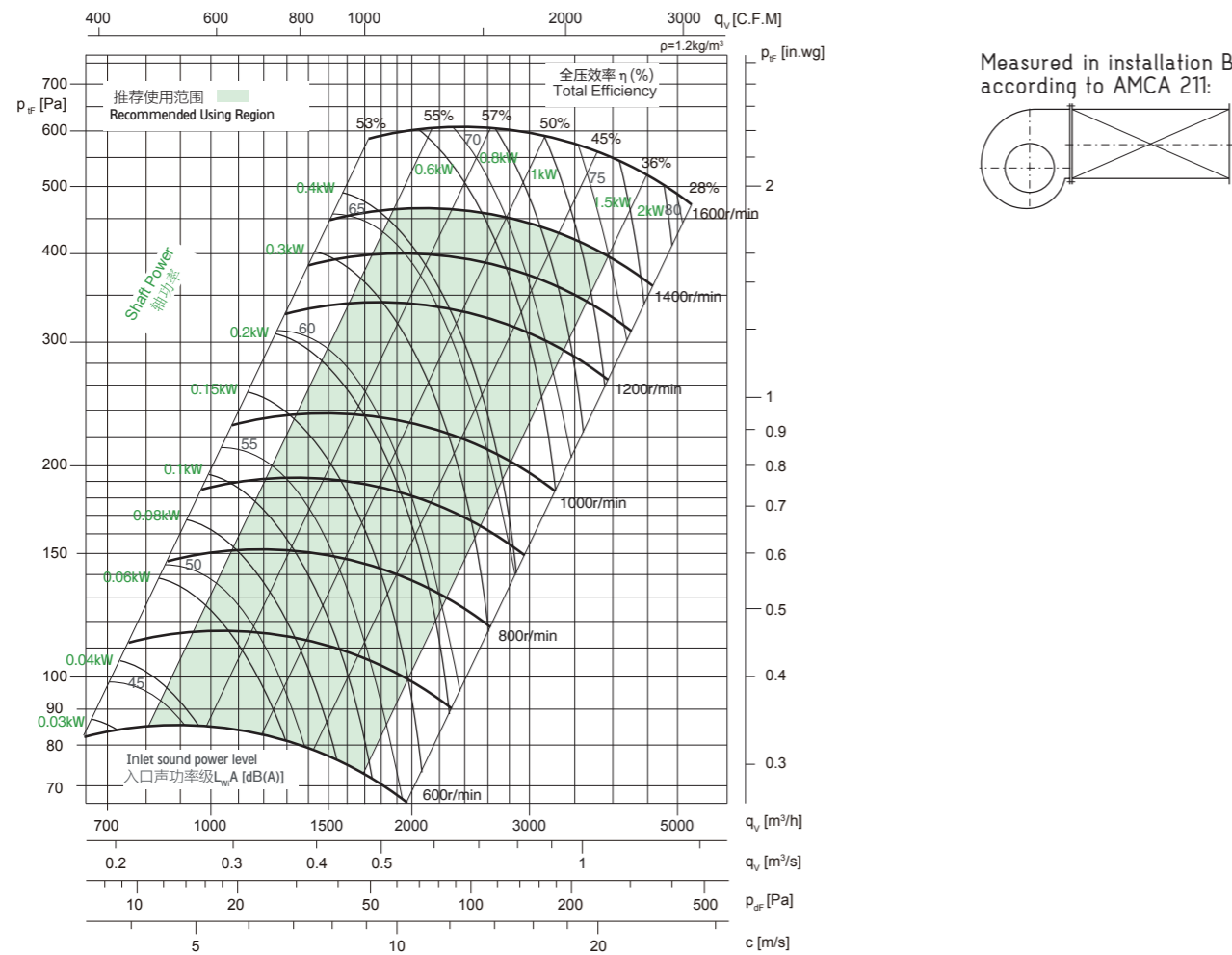
技术参数 Technical Data

Wheel diameter	叶轮直径	D = 250 mm	Fan weight	风机质量	m = 3.88 kg
Moment of inertia	转动惯量	J = 0.016 kg·m ²	Speed limit	极限转速	n _{max} = 1400 r/min

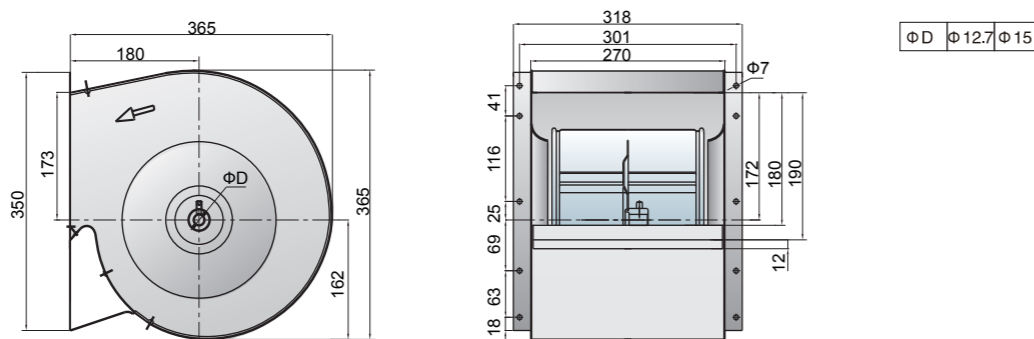
性能曲线 Performance Curves

Performance certified is for installation type B: free inlet, ducted outlet. Power rating (kW) does not include transmission losses. Performance ratings do not include the effects of appurtenances (accessories). The A-weighted sound ratings shown have been calculated per AMCA International Standard 301. Values shown are for inlet L_{WA} sound power levels for installation type B: free inlet, ducted outlet.

经认证的性能是B类安装:自由入口,管道出口。功率额定值(kW)不包括传输损失。各项性能额定值不包括附属物(附件)的影响。所示A加权声音性能额定值已按AMCA International标准301计算。所示值为安装类型B:自由入口,管道出口的声功率级(入口L_{WA})。



外形尺寸 Overall Size



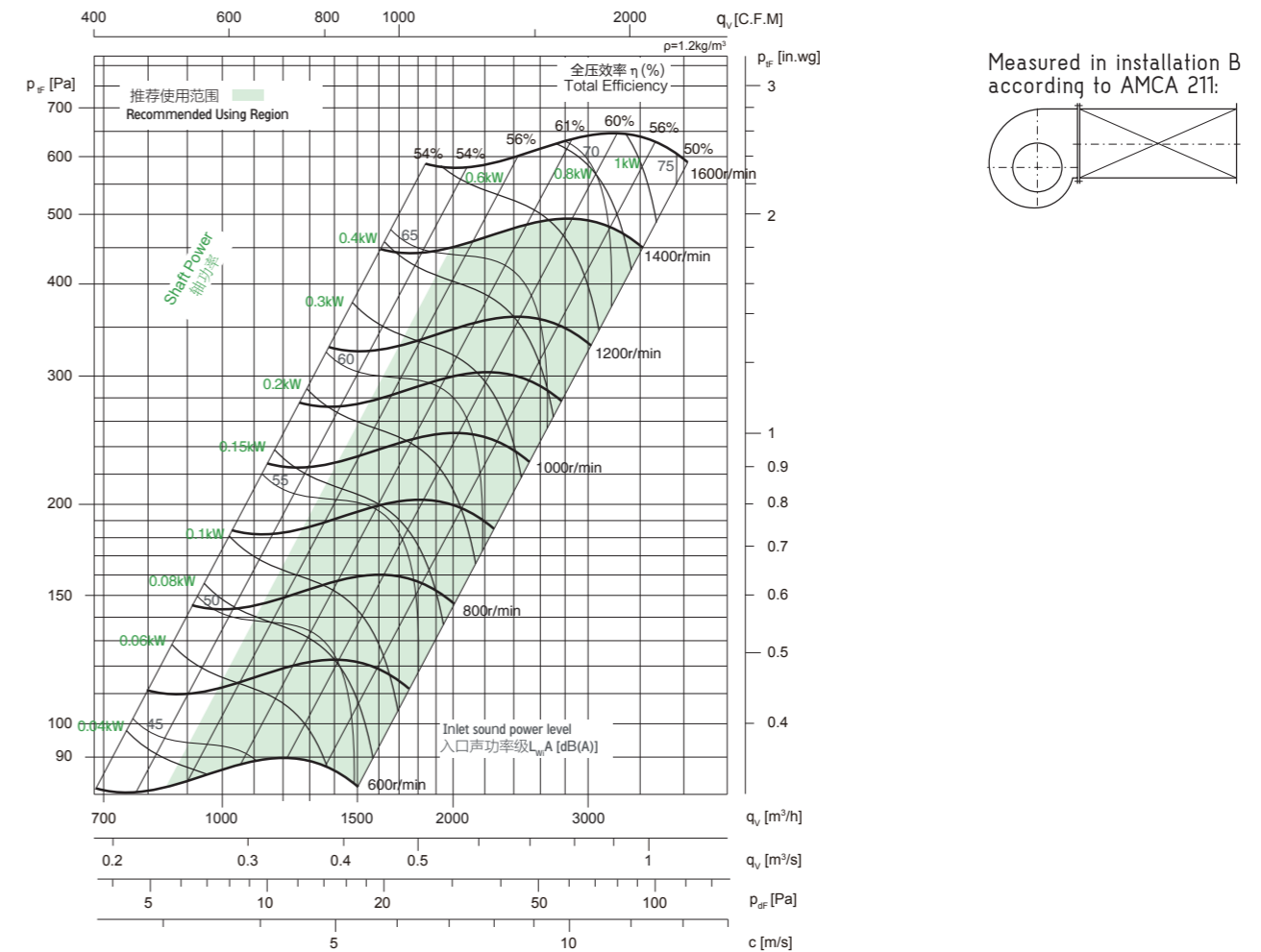
技术参数 Technical Data

Wheel diameter	叶轮直径	D = 250 mm	Fan weight	风机质量	m = 5.02 kg
Moment of inertia	转动惯量	J = 0.018 kg·m ²	Speed limit	极限转速	n _{max} = 1400 r/min

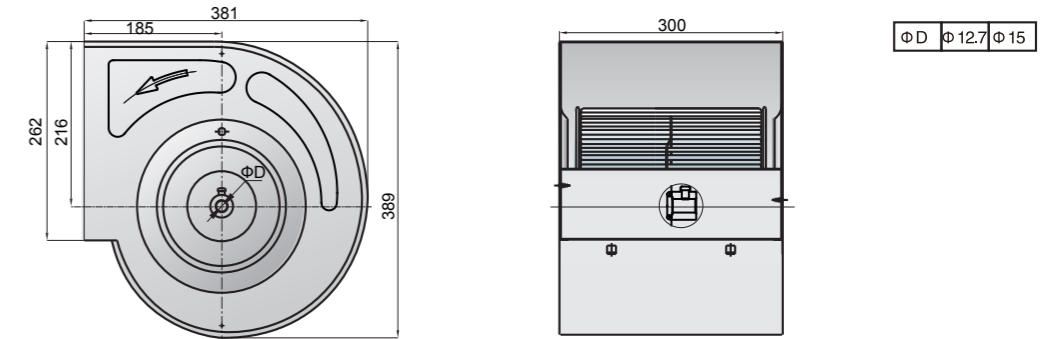
性能曲线 Performance Curves

Performance certified is for installation type B: free inlet, ducted outlet. Power rating (kW) does not include transmission losses. Performance ratings do not include the effects of appurtenances (accessories). The A-weighted sound ratings shown have been calculated per AMCA International Standard 301. Values shown are for inlet L_{WA} sound power levels for installation type B: free inlet, ducted outlet.

经认证的性能是B类安装:自由入口,管道出口。功率额定值(kW)不包括传输损失。各项性能额定值不包括附属物(附件)的影响。所示A加权声音性能额定值已按AMCA International标准301计算。所示值为安装类型B:自由入口,管道出口的声功率级(入口L_{WA})。



外形尺寸 Overall Size



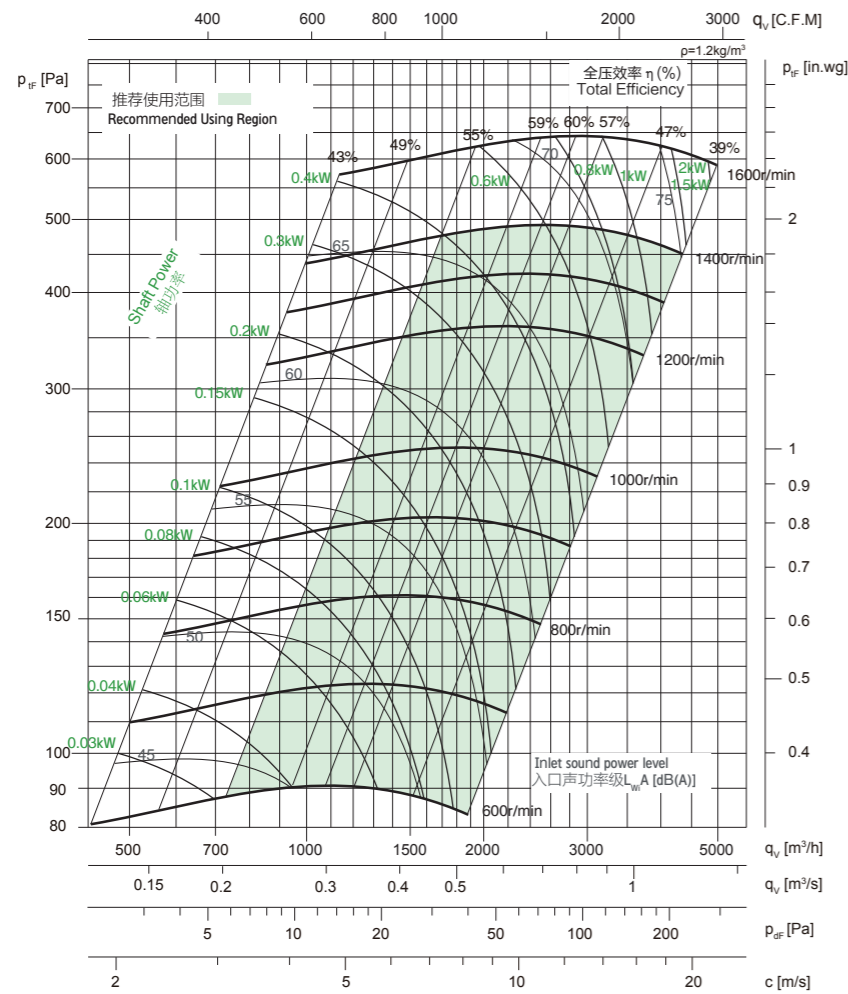
技术参数 Technical Data

Wheel diameter	叶轮直径	D = 250 mm	Fan weight	风机质量	m = 4.29 kg
Moment of inertia	转动惯量	J = 0.018 kg m ²	Speed limit	极限转速	n _{max} = 1400 r/min

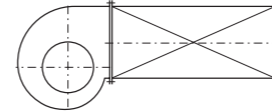
性能曲线 Performance Curves

Performance certified is for installation type B: free inlet, ducted outlet. Power rating (kW) does not include transmission losses. Performance ratings do not include the effects of appurtenances (accessories). The A-weighted sound ratings shown have been calculated per AMCA International Standard 301. Values shown are for inlet L_{WA} sound power levels for installation type B: free inlet, ducted outlet.

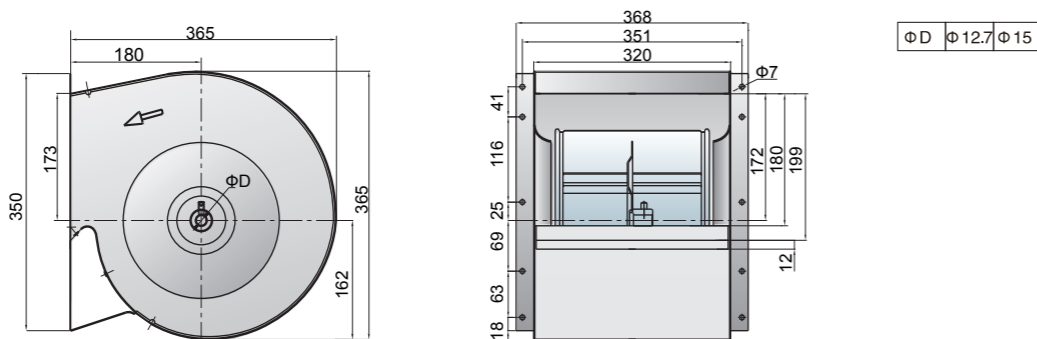
经认证的性能是B类安装:自由入口,管道出口。功率额定值(kW)不包括传输损失。各项性能额定值不包括附属物(附件)的影响。所示A加权声音性能额定值已按AMCA International标准301计算。所示值为安装类型B:自由入口,管道出口的声功率级(入口L_{WA})。



Measured in installation B according to AMCA 211:



外形尺寸 Overall Size



SYZ 系列离心式空调风机